

RED STOP Couperose & Rosacea Sensitive Skin



CHANTARELLE
Laboratory Derm Aesthetics

ANTI-REDNESS THERAPY

Lactobionic acid | Gluconolactone | Azelaic acid | Moisturising, soothing and anti-bacterial formulas

ANTI-REDNESS DERMOEXPERT

RED STOP is an exceptional year-round dermal treatment created especially for the skin with dilated capillary problems - Couperose, and for sensitive skin with Rosacea symptoms prone to erythema and irritation - Sensitive Rosacea. These skin types are characterised by excessive reaction resulting in **redness** and irritation after the exposure to adverse external and internal factors, such as aggressive external conditions (temperature fluctuations, wind, sun), improper skin care, shallow vascularisation, improper diet, solar radiation, some drugs and genetic factors

Spectacular effects of redness and inflammation symptoms reduction, moisturising and soothing, skin rejuvenation and smoothing are provided by an innovative active base of preparations: acids – Lactobionic PHA, Gluconolactone PHA and Azelaic AzA, anti-oxidant flavonoides and vitamin C, moisturising, anti-stress and soothing ingredients, numerous plant extracts.

The common treatment base for couperose skin and extremely sensitive skin with rosacea includes the application of PHA - AzA acids 10% and 25%. The next stages of the treatment for both skin types use dedicated preparations and separate procedures.

RED STOP ACTIVE FORMULA

LACTOBIONIC ACID is a next-generation antioxidant acid that gently exfoliates, but without irritating the skin. Stimulates skin renewal, moisturises. Reduces telangiectasias and dilated capillaries. Effectively binds water, strengthening the skin barrier. Can be used all year round.

GLUCONOLACTONE ACID non-irritating, highly moisturising substance that strengthens the epidermal barrier, accelerates the regeneration, regulates keratinisation. Improves skin immunity to aggressive external factors. Can be used all year round.

AZELAIC ACID has antibacterial properties, reduces symptoms of inflammatory changes - pustules, papules, redness and erythema. Brightens skin discolorations and scars.

TI-RUTIN an antioxidant flavonoid with the ability to enhance flexibility and tightness of capillaries, stimulates microcirculation. Reduces symptoms of inflammation and irritation, eases skin tension discomfort.

VITAMIN C-SAP a stable form with the rejuvenating effect, stimulating the synthesis of collagen. Has anti radical, anti-bacterial and skin lightening properties. Strengthens dilated capillaries.

VECTICELL C Liposomal-encapsulated concentrated vitamin C. It has antioxidant properties by fighting free radicals, sealing blood vessels and reducing redness, stimulates collagen synthesis and regeneration of the epidermis, has anti-inflammatory properties, strengthens protection against UV radiation.

ALLANTOIN VC vitamin C complex with allantoin. It combines the whitening, antioxidant and anti-aging effects of vitamin C with the soothing and moisturizing effect of allantoin. It protects against free radicals and UV damage, reduces the effects of photoaging and skin aging.

STRESS-BLOCKERS obtained from Rhodiola Rosea has anti-stress and relaxing properties, improving the sense of comfort and well-being. It stimulates the production of beta-endorphins and has antioxidant properties.

SKIN MATRIX telomerase gene activator, slows down the aging of cells, improving telomeres replication capacity. It increases the elasticity and firmness of the skin, and improves face contour.

DNA INFRA-RENOVER is a combination of Caesalpinia spinosa tannins and sunflower sprout extract. It ensures special antioxidant protection against infrared radiation IR, in particular IR-A and against blue light HEV. It protects mitochondrial DNA, stops the photoaging process, protects the skin from the effects of sun exposure and urban pollution.

RED CORAL ALGAE (Corallina Officinalis); an extract rich in magnesium and calcium, which contribute to the maintenance of the skin's hydro-lipid balance, improve its elasticity and hydration. They also have antioxidant and antibacterial properties.

ACTIVE FORMULA ENRICHED:

SALICYLIC ACID, VITAMIN E, EXTRACTS OF BEARBERRY, BURDOCK, SALVIA, LEMON, IVY, SAPONARIA, BLADDER WRACK, CASTOR, AVOCADO, WHITE LILY, FLAX, PAPAI, MILK HORSE, CHESTNUT, ARNICA MONTANA, HAMAMELIS, HYPERICUM, EMBLICA, ROCK SAMPHIRE, VIOLA ODORATA, GREEN TEA, ALOE JUICE, AVOCADO OIL, MACADAMIA OIL, SHEA BUTTER, KAOLIN, UREA, MENTHOL, ALLANTOIN, BEESWAX

Effects

- ♦ reduces erythema, irritation symptoms and vascular changes
- ♦ seals and shrinks capillaries
- ♦ improves micro-circulation
- ♦ repairs epidermal barrier functions
- ♦ moisturises and soothes the skin
- ♦ improves stress resistance and autoregeneration
- ♦ has anti-bacterial and anti-inflammation properties
- ♦ rejuvenates and improves the skin condition

TREATMENT FREQUENCY

- ♦ sonophoresis

FREQUENCY OF TREATMENT

- ♦ 4 - 6 treatment sessions, once a week
- ♦ or as an individual treatment

TREATMENT TIME

- ♦ 80 minutes



RED STOP Couperose & Rosacea Sensitive Skin

Step by step TREATMENT SCHEDULE

TREATMENT BASE COMMON - PHA-AzA ACIDS for FACE SKIN RED STOP couperose skin and RED STOP sensitive skin, with rosacea symptoms

1. Remove eye make-up using **Luxury Eye Make-up Remover**; apply a small portion of the product onto cotton pads and wash the eyes until the pads are clean.
2. Remove face make-up using **Anti-Redness Cleansing Milk**; wash any residue off with water. Tone the skin using **Anti-Redness Calming Toner**. It is recommended to apply a 5 minutes' soothing and anti-stress compress onto the face and eye areas.
3. Apply a thin layer of **Peel Formula PHA-AzA Acid 10% pH 4.5** evenly onto the face skin. Leave it for 5 minutes, wash off with water, dry the skin. Avoid eye areas and mucous membranes.
4. Apply a thin layer of **Peel Formula PHA-AzA Acid 25% pH 3.5** evenly onto the face skin. Leave it for 5 minutes, wash off with water, dry the skin. Avoid eye areas and mucous membranes.
5. Apply a thin layer of **Neutral Formula PHA-AzA Acid- (an acid neutraliser)** evenly onto the skin surface. Leave it for 5 minutes, wash off with water and tone the skin.

COUPEROSE SKIN - TREATMENT STEPS

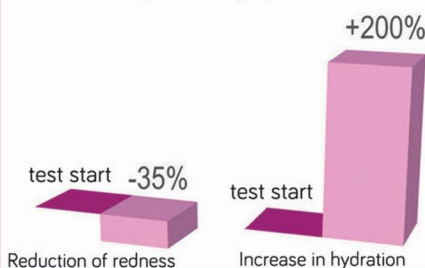
6. Apply **Anti-Couperose Radiance Booster 42% Gel (concentrate in an ampoule)** with sonophoresis for up to 10 minutes or manually.
7. Apply **Couperose Gel Mask Calming Anti-Redness** with sonophoresis for up to 10 minutes or apply manually a thicker layer of the product and leave it on the skin for 20 minutes; wash any residue off with water and tone the skin.
NOTE: It is also recommended to apply a plastic algae mask and in this case do not wash the gel mask off.
8. Apply a thin layer of **Couperose PHA Day Cream SPF25 UVA/UVB**, onto the face skin and leave it to absorb.
9. Proper home care tips.

ROSACEA SENSITIVE SKIN - TREATMENT STEPS

6. Apply **Anti-Rosacea Booster 32% Ampoule (concentrate in an ampoule)** with sonophoresis for up to 10 minutes or manually.
7. Apply a layer film of **Anti-Redness & Anti-Rosacea Mask** and leave it on the skin for 15 minutes; wash any residue off with water and tone the skin.
8. Apply a thin layer of **Rosacea AzA Acid Day Cream SPF35 UVA/UVB**, onto the face skin and leave it to absorb.
9. Proper home care tips.

RED STOP Sensitive Rosacea Skin*

- Reduces redness by -35%
- Increases hydration by up to +200%

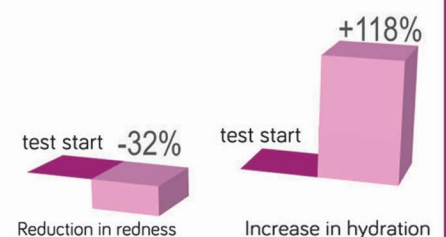


The effectiveness of
RED STOP preparations
has been confirmed
by the approval tests

* a group of 10 test subjects during the 28 days of testing, 2009r
** a group of 15 test subjects during the 28 days of testing, 2009r

RED STOP Couperose**

- Reduced redness by -32%
- Increased hydration by up to +118%



RED STOP Couperose & Rosacea Sensitive Skin

TREATMENT FORMULATIONS

ACTIVE INGREDIENTS

SPECIAL AESTHETICS

Luxury Eye Make-Up Remover Smoothing & Calming Cleanser Sensitive Phyto-Extracts; CP0622 200ml

extracts of saponaria, calendula, horsetail, witch hazel extract (hamamelis), sage, green tea, macadamia oil, vitamin E, allantoin

RED STOP Anti-Redness Cleansing Milk Couperose & Rosacea Sensitive Skin

Delicate gel milk, moisturising, soothing and calming, improves blood circulation, strengthens the tightness of blood vessels; CP0109 500ml, CD0109 200ml

extracts of burdock, sage, lemon, ivy, saponaria, bladder wrack, watercress, avocado, hamamelis

RED STOP Anti-Redness Calming Toner Alcohol-Free Isotonic Water Couperose & Rosacea Sensitive Skin

Non-alcohol isotonic calming toner, reduces irritation symptoms. Restores isotonic balance, appropriate skin moisturising and mineralisation. Has anti-oxidant properties. Also perfect as a soothing and anti-stress compress for face and eyes. Not suitable for cavitation treatments; CP0210 500ml, CD0210 200ml

extracts of red algae, white lily, flax, aloe juice

RED STOP Peel Formula PHA-Aza Acid 10% pH 4.5 Couperose & Rosacea Sensitive Skin

Thoroughly cleanses the skin and removes sebum, prepares the skin for the next exfoliation stage. Improves moisturisation, stimulates cell regeneration, reduces sensitivity to irritation. Has anti-inflammatory and anti-free radical properties; CP0513 100ml

lactobionic acid, gluconolactone, azelaic acid, extracts of horse chestnut, arnica, hamamelis, ivy, hypericum, grapevines, flax, sage, papaya, milk thistle, saponaria

RED STOP Peel Formula PHA-Aza Acid 25% pH 3.5 Couperose & Rosacea Sensitive Skin

eliminates dead epidermal cells and increases trans-dermal diffusion of active ingredients. Strengthens blood vessels, improves blood circulation. Reduces redness, soothes inflammation, strengthens skin immunity to external factors; CP0514 100ml

lactobionic acid, gluconolactone, azelaic acid, extracts of papaya, milk thistle, hamamelis

RED STOP Neutral Formula PHA-Aza Acid Neutraliser Couperose & Rosacea Sensitive Skin

Restores appropriate skin pH. Has healing, calming and soothing properties. Reduces the feeling of hotness thanks to a cooling effect; CP0515 200ml

extracts of horse chestnut, arnica, hamamelis, ivy, hypericum, grapevine, allantoin, menthol

RED STOP Anti-Couperose Radiance Booster 42% Gel Ampoule Sonophoresis Professional

has strong constricting properties, brightens red spots, soothes and calms the skin; CP1134 10x2.5ml



Ti-Rutin - antioxidant flavonoid, vitamin C (SAP), Allantoin VC - complex vitamin C with allantoin, Skin Matrix, extracts of horse chestnut, arnica montana, hamamelis, ivy, hypericum, grapevine, emblica, bearberry (arbutin), rock samphire, papaya, viola, aloe juice

RED STOP Couperose Gel Mask Calming Anti-Redness Couperose Skin

for couperose skin; to be applied with sonophoresis, with strong constricting properties, strengthens blood vessel walls and improves their tightness, soothes irritation and reduces redness; CP0813 200ml



lactobionic acid, gluconolactone, Ti-Rutin - antioxidant flavonoid, Allantoin VC - vitamin C complex with allantoin, extracts of horse chestnut, arnica montana, hamamelis, ivy, hypericum, grapevine, bearberry (arbutin), avocado oil, Shea butter, beeswax

RED STOP Couperose PHA Acid Day Cream SPF25 UVA/UVB Couperose Skin Anti-Redness

moisturising, smoothing and soothing, with green pigment masking redness and evening out the skin colour, light texture does not block skin pores. Reduces erythema, constricts dilated capillaries, while improving firmness and resilience. May be used under make-up; CP1327 100ml, CD1327 50ml

lactobionic acid, gluconolactone, Ti-Rutin - antioxidant flavonoid, Allantoin VC - vitamin C complex with allantoin vitamin E, extracts of horse chestnut, arnica montana, hamamelis, ivy, hypericum, grapevine, papaya, macadamia oil, Shea butter, allantoin, beeswax, DNA Infra-Renover - special antioxidant protection, UVA / UVB filters

RED STOP Couperose PHA ACID Night Cream

moisturises, regenerates and soothes, with a light texture that prevents pores from clogging. Designed for vascular skin, prone to redness and irritation. Reduces blushing and soothes irritation, regenerates, hydrates, improves skin condition. Has anti-radical properties, strengthens oxidative stress resistance. Reduces the visibility of capillaries, strengthens and tightens their walls. Skin is smoother, calm, without the tension feeling; CD1328 50ml

lactobionic acid, gluconolactone, Ti-Rutin - antioxidant flavonoid, Allantoin VC - vitamin C complex with allantoin, Skin Matrix - telomerase gene activator, vitamin E, extracts of horse chestnut, arnica montana, hamamelis, ivy, hypericum, grapevine, green tea, oil macadamia oil, avocado oil, Shea butter, allantoin, Infra-Renover DNA

RED STOP Anti-Rosacea Radiance Booster 32% Gel Ampoule Sonophoresis Professional

for extremely sensitive and rosacea skin, reduces redness and inflammation, moisturises, soothes, has anti-bacterial properties, brightens, with immuno-stimulating effect; CP1136 10x2.5ml



Vecticell C - vitamin C concentrate with extremely stable forms, Allantoin VC - vitamin C complex with allantoin, Stress-Blockers - stimulates the production of beta-endorphins, Skin Matrix - telomerase gene activator, vitamin E, extracts of horse chestnut, arnica montana, hamamelis, ivy, hypericum, grapevines, avocado, bearberry (arbutin), rock samphire, green tea

RED STOP Anti-Redness & Anti-Rosacea Mask Anti-Bacterial Cool Calming

fragrance-free; with anti-bacterial, slightly cooling and soothing properties, reduces redness and spots, for sensitive skin, with rosacea, stressed and irritated; CP0834 150ml, CD0814 50ml

azelaic acid, lactobionic acid, salicylic acid, Ti-Rutin - antioxidant flavonoid, Stress-Blockers - stimulates the production of beta-endorphins, vitamin E, extracts of horse chestnut, arnica montana, hamamelis, ivy, hypericum, grapevine, Shea butter, kaolin, allantoin, menthol

RED STOP Rosacea Aza Acid Day Cream SPF35 UVA/UVB Anti-Bacterial Calming Anti-Redness

fragrance-free, light-weight cream; does not block skin pores; soothes, has anti-bacterial and anti-stress properties, with very high SPF protection. Reduces redness and irritation, moisturises, softens and smooths. May be used under make-up; CP1329 100ml, CD1329 50ml

azelaic acid, Ti-Rutin - antioxidant flavonoid, Stress-Blockers - stimulates the production of beta-endorphins, Allantoin VC - vitamin C complex with allantoin, vitamin E, extracts of horse chestnut, arnica montana, hamamelis, ivy, hypericum, grapevine, avocado oil, Shea butter, kaolin, allantoin, urea, UVA/UVB filters

RED STOP Rosacea Aza ACID Night Cream

fragrance-free, azelaic acid based cream, with a light texture that does not clog pores. Soothes, has anti-bacterial and stress reducing properties. Suitable for sensitive skin, with symptoms of rosacea, prone to redness and irritation. Reduces redness and irritation, soothes and calms the skin. Brightens and evens skin tone. Increases the epidermal barrier resistance, promotes auto-regeneration; CD1330 50ml

azelaic acid, Stress-Blockers - stimulates the production of beta-endorphins Allantoin VC - vitamin C complex with allantoin, extracts of horse chestnut, arnica montana, hamamelis, ivy, hypericum, grapevine, saponaria, papaya, macadamia oil, Shea butter, allantoin, urea

RED STOP Redness Reducer Calming Concentrate

Moisturises, soothes, contains a green pigment which evens the skin tone, for vascular or sensitive skin with rosacea symptoms, prone to redness and irritation. Reduces the symptoms of inflammation and irritation. Improves micro and macrocirculation, tightens capillaries. Moisturizes, soothes, reduces skin tension. Increases protection against the damaging effects of free radicals with antioxidant and anti-aging properties; CD1325 30ml

lactobionic acid, gluconolactone, Ti-Rutin - antioxidant flavonoid, Allantoin VC - vitamin C complex with allantoin, vitamin E, extracts of horse chestnut, arnica montana, hamamelis, ivy, hypericum, grapevine, avocado oil, Shea butter