

CHANTARELLE  
Laboratory Derm Aesthetics



# HOME CARE

High-Tech Cosmetics



FOR SPECIALIST COMPREHENSIVE BEAUTY TREATMENT,  
AVAILABLE ONLY IN DERMO-AESTHETIC STUDIOS,  
AESTHETIC MEDICINE AND MED SPA

# NON-INVASIVE BEAUTY PHILOSOPHY

BEAUTY AND PERFECTION FROM THE FIRST APPLICATION

**CHANTARELLE Laboratory Derm Aesthetics** is a premium brand of cosmetics for comprehensive, specialist beauty care in-salon treatments and for home skin care. Brand experts care to ensure spectacular effects of preparations, so as to cater to every need and want of salons and their most demanding patrons. For the highest efficacy of preparations, Chantarelle combines scientific knowledge and cutting-edge technology with innovative cosmetology & aesthetic medicine solutions.

## IMMEDIATE AND LONG-TERM EFFECT

Immediate improvement in the skin condition is noticeable after the first application of preparations thanks to advanced active formulas. Systematic use in accordance with the Chantarelle procedures is essential to ensuring long-term effect of a beautiful and healthy skin.

## RICH, INNOVATIVE, OPTIMALLY HIGHLY CONCENTRATED ACTIVE FORMULAS

Chantarelle preparations are characterized by richness of biotechnological and plant components that not only allow eliminating ill effects of many skin problems, but also help to get to their root cause. As well as offering targeted action for specific care purposes, active formulas include ingredients that additionally promote healthy skin – they rejuvenate, moisturize, regenerate and soothe. Innovative active components used also in pharmacy have been optimally selected for the ingredients of each preparation to ensure maximum effectiveness

## DERMACEUTICAL CARE REGIMEN - ABOUT 100 PREPARATIONS HOME CARE

A complete line allow selecting the right preparations and exact care regimen for a specific skin problem. Care programs include:

- for dry, oily, combination skin, couperose skin, with acne, rosacea, sensitive and reactive skin
- intensely rejuvenating, hydrating, nourishing, lifting, wrinkle filling, lipid regeneration, brightening
- against specific skin problems such as spots, symptoms of photoaging or scars
- special care of the skin around the eyes
- slimming and anti-cellulite preparations

## SAFETY AND SECURITY

CHANTARELLE care preparations dedicated to the given type of skin are very well tolerated by skin, even very sensitive skin. All day creams have high UVA/UVB filter protection.



# SPECIAL AESTHETICS

## SPECIAL CARE PREPARATIONS

Special-purpose preparations group with innovative home-care solutions for different skin types. They may be used alone or in combination with preparations from other CHANTARELLE Laboratory Derm Aesthetics product lines, in accordance with the prescribed skin care procedure. They include cleansing and peeling cosmeceuticals and dermocosmetics, body care products and specialist skin creams: anti-aging, anti-wrinkle, moisturising and regenerating.

### ULTRA SENSITIVE CLEANSING MILK

for all skin types; contains extracts of hollyhocks and broadleaf plantain, enriched with extracts of sage, thistle burdock and aloe. Hydrates, soothes irritation, refreshes the skin. Leaves the skin thoroughly cleansed, soft and hydrated, and better protected against free- radicals; CD0122 200ml

### ULTRA SENSITIVE TONER WITH HAMAMELIS & ALOE VERA EXTRACTS

For cavitation and cleansing of all skin types, including sensitive or dry skin with broken capillaries. Soothing, with hamamelis and aloe extracts. Soothes irritation and redness. Improves blood supply to the skin, moisturises, softens and smoothes the skin, with anti-inflammatory properties; CD0222 200ml

### LUMI-CREAM FACE & EYELID BRIGHTENING PEELING

Gently and effectively smoothes, brightens, evens out skin tone and reduces spots of various etiologies. It contains papaya enzymes, natural saponins from soapwort, pineapple extract and Shea butter. It is designed for all skin types, including sensitive skin, also under eyes and on eyelids.; CD0413 50 ml

### LICORICE A MOISTURISING DAY CREAM SPF 20 UVA/UVB

Moisturising cream with licorice, vitamin A and SPF20 UVA/UVB filters for the daily beauty routine of all skin types. Also for sensitive and capillary skin in need of moisturisation and reconditioning. Regulates epidermal cornification processes, rebuilds the lipid barrier. Smoothes the first wrinkles, brightens the skin tone. Provides relief to rough and irritated skin. Increases protection against harmful effects of UV. Also recommended for skin moisturisation and UV-protection after aesthetic treatments; CD1399 50 ml





## HIBISCUS A REGENERATING NIGHT CREAM

For all skin types, including sensitive and capillary skin in need of regeneration, smoothing and elasticising. Reduces imperfections – smoothes wrinkles and reduces roughness, brightens the skin tone, moisturises and improves elasticity. Soothes irritated skins, has anti-bacterial properties. Also recommended after aesthetic treatment; CD1400 50 ml



## COVER SILVER CREAM SPF50 UVA/UVB

Antibacterial cream with silver and very high protection SPF50 UVA/UVB. The cream is recommended in addition to its protective effect, as a high filter and regenerative, also against inflammatory symptoms for oily, acne-prone and problematic skin; CD1353 50 ml



## INTENSE MANDELIC PHA NIGHT CREAM 15% pH 4.0

Anti-bacterial cream, regulates the sebum and hydration balance boosts hydration and renewal of collagen fibres, evens the skin tone, reduces discolourations. Opens sebum secretion ducts, normalises the water and lipid balance. Strongly moisturises and decreases transepidermal water and urea loss. Regenerates and smoothes the skin. Brightens spots and discolourations. Has soothing and anti-bacterial properties; CD1432 50 ml



## REGENERATING ANTI-WRINKLE CREAM MASK GABA

Contains a unique formula of active ingredients to instantly regenerate skin, reduce age and mimic wrinkles, with „Soft Focus effect“ boosts skin elasticity and hydration and provides relief to irritated skin. Gaba is a unique formula of plant-derived neurotransmitters and silicon polymers to reduce wrinkles both instantly and in the long term, stimulate the collagen synthesis, and enhance skin texture and firmness: CD0856 50ml







CHANTARELLE  
Laboratory Derm Aesthetics

**ABSOLUTE**  
**RICH MOISTURE**  
AGE DEFENSE

BEAUTY TREATMENT  
HOME CARE

**ABSOLUTE RICH HYDRATION WITH PEPTIDE EXFOLIATION TECHNOLOGY  
AND CERAMIDE HYDROLIPID REGENERATION**

An advanced year-round moisturising and rejuvenating therapy featuring peptide-based skin exfoliation. Regenerates the hydrolipid barrier, increases the skin's water reserves and activates repair mechanisms for effective wrinkle reduction, restored elasticity and a healthy glow.

Multi-level restoration of hydration  
and water potential

Protective barrier regeneration  
for the regulation of TEWL

Supplementation of lipids,  
NMF humectants and emollients

Intensive renewal of elasticity  
and reduction of wrinkles



We invite you to a laser treatment in a beauty salon.

## ABSOLUTE RICH MOISTURE - HOME CARE

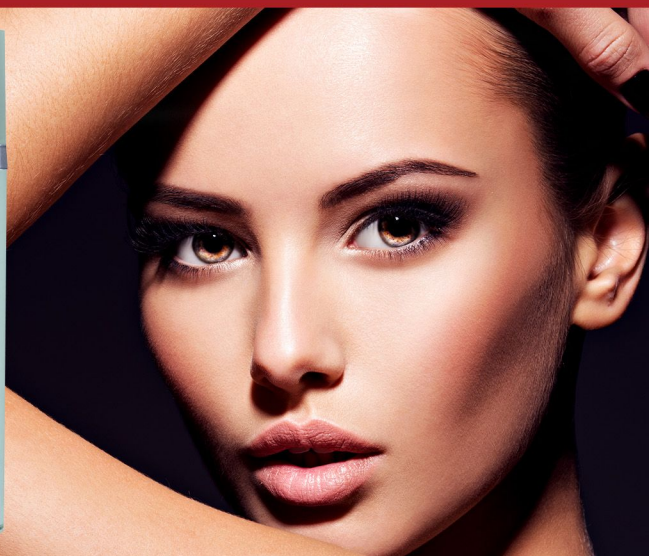


YOUR HOME  
DAILY  
RITUALS

- Absolute Moisturising Hydrolipidic Cleansing Gel Face & Neck (CD0127, 200ml)
- Absolute Moisturising Hydrolipidic Toning Foam Ceramide Booster Face & Neck (CD0227, 200ml)
- Absolute Moisturising Toning Mist Fresh Glow Face, Body & Hair (CD0228, 100ml)
- Absolute Moisturising Lift Effect Day Cream SPF30 UVA/UVB Ceramide & Collagen Booster (CD1478, 50ml)
- Absolute Moisturising Ceramide Night Cream Hydrolipidic Firmness Booster (CD1479, 50ml)
- Absolute Moisturising Peptide Non-Acid Peel Booster Face & Neck & Eyes (CD120230, 30ml)
- Absolute Moisturising Ceramide Serum Hydrolipidic Firmness Booster Face & Neck & Eyes (CD120330, 30ml)
- Absolute Moisturising Lift Effect Mask Ceramide & Collagen Booster Face & Neck (CD0862, 5ml)

### INNOVATIVE ACTIVE INGREDIENTS

- Biomimetic peptide to stimulate natural exfoliation
- Biomimetic glycosphingolipid and glycolipid complex rich in ceramides
- Intensive moisturizing amylopectin complex of rice and coralline algae
- A complex of lipids, polysaccharides and humectants that mimic NMF
- Hydroxyproline - the famous youth molecule with anti-ageing properties
- Active formula also includes: hyaluronic acid  
and 7 precious plant extracts moisturizing and vitamin E,  
allantoin and Shea butter



Home care application: manual or jade roller



# SUPERIOR YOUTH BOOST

BEAUTY TREATMENT  
HOME CARE



CHOOSE  
A TREATMENT  
FOR YOUR NEEDS  
YOUR SKIN

## TWO COMPLEMENTARY TREATMENTS UNDER ONE SKIN RENEWAL SYSTEM

- TREATMENT WITH MICRO-ENCAPSULATED RETINOL**  
 Strong dermo-therapy for boosting cell renewal, collagen synthesis, strengthening of skin structure, reduction of hyperpigmentation, and sebum regulation.
- TREATMENT WITH NIACINAMIDE AND GABA ACID**  
 An intensive dermo-therapy for skin rejuvenation and stimulation of the regeneration of the skin's protective barrier, collagen and hyaluronic acid with immediately visible effects of smoothing, moisturising and reduced wrinkles.

STRONG BOOSTER  
FOR ABSOLUTE  
REJUVENATIONA

### EFFECTS

- ✓ renewal and regeneration of the skin on the face, neck and décolleté
- ✓ reduction of wrinkles and furrows
- ✓ normalisation of sebum production
- ✓ improvement of elasticity and firmness
- ✓ smoothing and moisturising
- ✓ brightening of discolourations
- ✓ restoration of a healthy skin tone



We invite you to a laser treatment in a beauty salon.

The effect of perfect smoothing, moisturising and firming the skin.







- **Day Boost-Cream SPF50 UVA/UVB/IR/HEV Recovery Wrinkle Filler with Niacinamide & Gaba, Face & Neck, Ultra Rich Formula (CD1475, 50ml)**

### "Skin Renewal" treatment

- **Retinol Boost-Serum Rejuvenating Advanced**  
Repair Face & Neck with 0.1% pure micro-encapsulated Retinol Ultra Rich Formula (CD120030, 30ml)
- **Retinol Extreme Repair Night Boost-Cream**  
Face & Neck with pure micro-encapsulated Retinol Ultra Rich Formula (CD1476, 50ml)

### "Wrinkle filling" treatment

- **Niacinamide & Gaba Boost-Serum**  
Advanced Recovery Wrinkle Filler  
Face & Neck Ultra Rich Formula (CD120130, 30ml)
- **Niacinamide & Gaba Night Boost-Cream**  
Firming Wrinkle Filler, Rich Recovery  
Face & Neck Ultra Rich Formula (CD1477, 50ml)

- **PERFECT SMOOTH Rich Recovery Boost-Mask with Niacinamide (CD0860, 5ml)**  
(application: 1-2 times a week)

Serums and creams can be used interchangeably. Use sun protection.



YOUR HOME  
DAILY RITUAL

### THE MOST IMPORTANT ACTIVE INGREDIENTS:

- Micro-encapsulated Retinol (Vitamin A 233310 IU/g) – strongly stimulates skin renewal, smoothes wrinkles and furrows, increases density, firmness and elasticity.
- Niacinamide - a form of vitamin B<sub>3</sub> with the features of a strong antioxidant - stimulates the production of collagen and reduces wrinkles, increases skin hydration and elasticity.
- GABA gamma-aminobutyric acid - a neuroactive rejuvenating ingredient for immediate and long-lasting reduction of wrinkles.
- The formula of the active line also includes: Mela-Ginseng - Korean ginseng extract, Vecticell C - vitamin C complex, Vederine® - booster vitamins D, hyaluronic acid, rich formulas of marine origin: collagen, elastin, glycogen, plant extracts.

**Home care application: manual or jade roller**





# PLANT PLASMA

BEAUTY TREATMENT  
HOME CARE

**PLANT PLASMA CHANTARELLE** are modern treatments in the field of regenerative cosmetology, which use growth factors that naturally stimulate the skin to renew.

## SKIN REJUVENATION, REGENERATION AND REMODELING

- ✓ effective reduction of wrinkles and roughness
- ✓ increasing flexibility and firmness
- ✓ stimulating the production of collagen
- ✓ improvement of the structure of elastic fibers
- ✓ stimulation of moisturizing mechanisms

**The effects of the stimulating effect of the treatment are multiplied thanks to the PDT laser photodynamic application**

## Protection of the microbiome

The Plant Plasma treatment supports the balance of the skin's resident flora. Thanks to its action against harmful bacteria and conditions inflammation protects the skin's own microbiome (microbiota).







CHOOSE THE  
TREATMENT  
FOR THE NEEDS  
OF YOUR SKIN

## TREATMENT INDICATIONS

- **Treatment with Epidermal Growth Factor EGF** – for skin with visible signs of aging, dry, with loss of tension, low elasticity, a network of fine wrinkles, heterogeneous color, gray tone.
- **Treatment with Transforming Growth Factor TGF-β2** – for skin with clear signs of aging chronological and exaging - with deep wrinkles, lack of skin elasticity and damaged structure of collagen.



## PLANT PLASMA - HOME CARE

### EGF Repair Lifting Day Cream SPF20 UVA/UVB Strong Repair Booster

for intensive stimulation of revitalisation and rejuvenation of the skin, with lifting, smoothing and moisturising properties. For skin requiring hydration, firming and wrinkle smoothing. (CD1471, 50ml)

### EGF Repair Lifting Night Cream Face & Eyes Strong Repair Booster

Intensively stimulates the renewal and rejuvenation of the skin requiring moisturising, firming and wrinkle smoothing. The cream is enriched with the skin protective barrier regenerating, moisturising and antioxidant ingredients. (CD1472, 50ml)

### TGF-B2 Plant Plasma Repair Night Cream Face & Eyes Strong Repair Booster

Rejuvenating and anti-wrinkle night cream with transforming growth factor TGF-β2, which intensely stimulates skin renewal. It strongly stimulates the synthesis of collagen, fibronectin and integrin by increasing the proliferation of fibroblasts and inhibits matrix degradation by counteracting mataloproteinases. (CD1480, 50ml)

### TGF-B2 Plant Plasma Serum Strong Collagen Booster

Serum with transforming growth factor TGF-β2 for intensive renewal and stimulation of collagen and restructuring of the skin of the face, around the eyes, neck, décolleté and hands. It stimulates the production of collagen I, collagen III, fibronectin and integrin, thanks to which it strengthens the structure of the skin's supporting fibers and reduces wrinkles. (CD120530, 30ml)

### EGF Plant Plasma Serum Strong Repair Booster

Serum with epidermal EGF growth factor for a strong rejuvenation of the skin of the face, around the eyes, neck, décolleté and hands. It intensely stimulates skin renewal, strengthens its regeneration, increases elasticity and elasticity, and smoothes wrinkles and roughness. It strengthens the synthesis of hyaluronic acid and immediately and long-term stimulates the moisturizing mechanisms. (CD120430, 30ml)



YOUR HOME  
DAILY  
RITUALS

## INNOVATIVE ACTIVE INGREDIENTS:

- **EGF EPIDERMAL GROWTH FACTOR** for effective reduction of sagging and wrinkles, regeneration of the epidermis, normalization of hydration and pore size.
- **TGF-β2 TRANSFORMING BETA GROWTH FACTOR** for a very strong rejuvenating effect by stimulating the production of collagen.
- **FILMEXEL®** with film-forming and protective properties against PM 2.5 and PM 10 dusts and irritants.
- **EQUIBIOME™** for microbiome protection, anti-bacterial and anti-inflammatory.

**Treatment application: PDT / LED laser or microneedle mesotherapy or manually**







# AGEMELAN HOLISTIC

BEAUTY TREATMENT  
HOME CARE

## INTENSIVE SKIN RENEWAL AND PROTECTION AGAINST DISCOLOURATION AND UNEVEN SKIN TONE.

for skin with I-IV photo-type, with discolouration and uneven skin tone, especially for dry, mature, vascular skin, with symptoms of premature aging and photo-aging, with wrinkles

### HOLISTIC EFFECTS:

- ✓ reduction of pigmentation changes, regulation of melanogenesis
  - inhibition of tyrosinase activity
- ✓ stimulation of enzymatic activity of sirtuin and cellular cleansing - detoxification
- ✓ repair of collagen and skin structure which affect melanin production and cause hyperpigmentation as a result of various types of damage
- ✓ strengthening of the skin barrier function- enhancement of skin integrity

The lower pH 4.5 of the formulas strengthens the protective barrier of the skin against pathogens and damage.

**The effects of the stimulating effect of the treatment are multiplied thanks to the application PDT photodynamic laser or thermodynamic device.**





YOUR HOME  
DAILY  
RITUALS

## AGEMELAN HOLISTIC - HOME CARE

- Cleansing Milk pH 4.5 Spot Brightening & Anti-Ageing (CD0125, 200ml)
- Toner pH 4.5 Spot Brightening & Anti-Ageing (CD0225, 200ml)
- Ascorbic Enzyme Peel pH 4.5 Spot Brightening & Anti-Ageing (CD041850, 50ml)
- Face & Body Spotless Serum pH 4.5 Spot Brightening & Anti-Ageing (CD1468, 30ml)
- Day Cream SPF25 UVA/UVB pH 4.5 Spot Brightening & Anti-Ageing (CD1469, 50ml)
- Night Cream pH 4.5 Spot Brightening & Anti-Ageing (CD1470, 50ml)
- Eye Cream pH 4.5 Spot Brightening & Anti-Ageing (CD0638, 30ml)



## INNOVATIVE ACTIVE INGREDIENTS

- **AQUATIDE Peptide** - the biomimetic peptide activates SIRT 1 sirtuins and detoxifying proteins that stimulate cell cleansing
- **NISINOXID®** - antibacterial and antioxidant system developed by the CHANTARELLE R&D department
- **VECTICELL C** - encapsulated vitamin C complex. It has anti-radical, photoprotective and anti-aging properties
- **ALLANTOIN VC** - Complex of L-ascorbic acid with allantoin, which combines the skin brightening, antioxidant and anti-aging properties
- **CURCUMIN** in micro-capsules with gradual release. It brightens discoloration and skin tone
- **BEARBERRY EXTRACT (arbutin)** - inhibits melanogenesis by reducing tyrosinase activity
- **MELA-GINSENG** korean ginseng root extract, targeted action of brightening discolorations
- **NEUROSPOT** - neuro-active ingredient with properties of smoothing out and reducing the intensity of skin spots
- **LIP 3-Peptide with 3D effect** - biomimetic peptide Pal-GHK increases the lip volume and repairs the lip skin
- **ULTRALIFT HYDROXYPROLINE** is a vector of hydroxyproline, a key collagen-specific element that has a triple anti-wrinkle, firming and moisturising effect



Treatment application: PDT / LED laser or THERMO device or sonophoresis or manual





# SEBUMELAN HOLISTIC

BEAUTY TREATMENT  
HOME CARE

**A normalising and brightening program with a pH of 4.5, intended for oily, acne-prone and combination skin; to reduce post-inflammatory discoloration and scars.**

It is a holistic treatment based on modern targeted active ingredients anti-inflammatory, sebum-regulating, rejuvenating and brightening properties.

## HOLISTIC EFFECTS OF ACTION

- ✓ reduction of post-inflammatory pigmentation changes, regulation of melanogenesis
- ✓ regulation of sebum secretion, reduction of pores and inflammation symptoms
- ✓ stimulation of the enzymatic activity of sirtuins and cell purification - detoxification
- ✓ detoxification, restoration and repair of damage due to the action of: free radicals, smog, chemicals, bacteria
- ✓ enhancing the skin barrier function - improving its integrity

The lower pH of 4.5 of all preparations strengthens the skin's protective barrier against pathogens and damage.

**The effects of the stimulating effect of the treatment are multiplied thanks to the application of a PDT photodynamic laser or a thermodynamic device.**







YOUR HOME  
DAILY  
RITUALS

## SEBUMELAN HOLISTIC - HOME CARE

- Cleansing Foam pH 4.5, Normalising Anti Acne Spot & Scars (CD0126, 200ml)
- Cleansing Toner pH 4.5, Normalising Anti Acne Spot & Scars (CD0226, 200ml)
- Citric Enzyme Peel pH 4.5 Normalising Anti Acne Spot & Scars (CD042050, 50ml)
- Mattifying Day Cream SPF25 UVA/UVB pH 4.5, Normalising Anti Acne Spot & Scars (CD1473, 50ml)
- Holistic Night Cream pH 4.5, Normalising Anti Acne Spot & Scars (CD1474, 50ml)



## INNOVATIVE ACTIVE INGREDIENTS

- **VECTICELL OMEGA** – is an encapsulated complex of selected Omega 3-6-9 acids
- **AQUATIDE Peptide** - a biomimetic peptide activates SIRT 1 sirtuins and detoxifying proteins, which stimulate cell cleansing
- **NISINOXID®** - an antibacterial and antioxidant system developed by the science and research department of CHANTARELLE
- **ALLANTOIN VC** - a complex of vitamin C with allantoin with whitening and antioxidant properties, anti-aging and soothing
- **SUPEROX-C™** - Australian Kakadu plum extract with a very high content of stable vitamin C
- **CITRIC ACID** exfoliating and improving the parameters of the skin.  
Increases skin firmness by increasing GAG levels
- **HYALURONIC ACID** - creates a protective film, increases moisture reserves, reduces transepidermal water loss (TEWL)



Treatment application: PDT / LED laser or THERMO device or sonophoresis or manual



CHANTARELLE  
Laboratory Derm Aesthetics

# PLATINUM PEEL & CURE

BEAUTY TREATMENT  
HOME CARE

**Exclusive PLATINUM line in beauty treatments combines the action of PHOTODYNAMIC BLEND-PEELINGS PDT chemical blend-peels with advanced REBUILDING DERMOCOURATION.**

The strength of the treatments is a composition of selected acids, platinum, Sodium DNA and a neuropeptide with the effect of the venom of the sea anemone.

## SPECTACULAR TREATMENT EFFECTS

- ✓ **accumulation of the strength of acids** - the effect of their action intensifies each other
- ✓ **photobiochemical enhancement** - modern photosensitive bio-chromophores CHANTARELLE in combination with the PDT LASER photodynamic method /LEDs trigger photobiochemical reactions in the skin, accelerating corrective actions
- ✓ **reconstruction, rejuvenation and cell renewal** - innovative ingredients active, they accelerate skin repair processes and reduce irritation
- ✓ **advanced protection SPF50 UVA / UVB / IR / HEV** and antioxidant against the effects of photoaging and aggressive external factors (free radicals, stress, smog)

**The effects of the stimulating effect of the treatment are multiplied thanks to PDT photodynamic laser application**







YOUR HOME  
DAILY  
RITUALS

## PLATINUM PEEL&CURE - HOME CARE

**Platinum Ultra Cure & Protect Day Cream SPF 50 UVA/UVB/IR**  
with very high UV and IR protection; for every skin type; especially recommended for advanced rejuvenation, after chemical peels and equipment-based aesthetic treatments. Contains rejuvenating platinum, repairing Sodium DNA and stable, very high UVA, UVB, and IR filters. (CD1466, 50ml)

**Platinum Ultra Cure Anti-Ageing Night Compress-Cream Face and Eyes**  
regenerates and soothes; for every skin type, especially recommended for advanced rejuvenation, after chemical peels and equipment-based aesthetic treatments. Contains rejuvenating platinum, repairing Sodium DNA, soothing sea anemone toxin like neuropeptide and antioxidant vitamin C with allanoin. (CD1467, 50ml)



## INNOVATIVE ACTIVE INGREDIENTS

- **PLATINUM** - a strong rejuvenating, regenerating and rebuilding effect. Reduces deformations in cells, participates in tissue reconstruction (healing, scarring)
- **SODIUM DNA** - intensively rejuvenates and regenerates the skin, has a moisturizing and photoprotective effect and antioxidant. It stimulates the repair mechanisms of epidermal cells
- **ANEMONE NEUROPEPTIDE** - a neuropeptide with the action of the venom of the sea anemone. blocks receptors TRPV1 pain. It soothes overactive skin, minimizes its reactions to stress and external factors
- **RETINOL (vitamin A 233310 IU/g)** a stable form of retinol in unique micro-capsules  
One of the most effective vitamins in anti-aging treatment due to its ability to stimulate collagen production, acceleration of cell renewal and normalization of keratinization of the skin
- **ACIDS:** mandelic, citric, kojic, phytic, salicylic, lactic, glycolic, shikimic, lactobionic, gluconolactone



**Treatment application: PDT / LED laser or manually**





CHANTARELLE  
Laboratory Derm Aesthetics

# REGENEVIA DNA

BEAUTY TREATMENT  
HOME CARE

**REGENEVIA DNA is a revolutionary dermotherapy for antioxidant skin regeneration and rejuvenation** based on the latest epigenetics and DNA cellular rejuvenation research; combats chronological ageing and photo-ageing aggravated by sugar-induced protein glycation and external irritants such as air pollution, stress, unhealthy lifestyle.

## PRODUCT LINE FOR SKIN REQUIRING STRONG REGENERATION AND STIMULATION OF CELL METABOLISM

- ✓ regenerates and protects mitochondrial DNA
- ✓ stimulates cell metabolism
- ✓ activates „the longevity gene“
- ✓ reverses effects of glycation and oxidation
- ✓ protects the skin against negative effects of photo-ageing and external irritants

**The effects of the stimulating effect of the treatment are multiplied thanks to the PDT laser photodynamic application or microneedle mesotherapy.**





CHOOSE  
A TREATMENT  
FOR THE NEEDS  
OF YOUR SKIN

## TREATMENT INDICATIONS

- **AGE Collagen Repair treatment** – strong regeneration and cellular rejuvenation for skin with chronological aging and photoaging, increased glycation of proteins by sugars (collagen damage, dryness, laxity, deep wrinkles, unhealthy yellow skin tone) - for mature and younger skin with accelerated aging.
- **Eye Cellular Anti-Ageing treatment** – strong regeneration and rejuvenation of the skin around the eyes with aging and photoaging - for all skin ages with wrinkles, puffiness and dark circles.

## REGENEVIA DNA - HOME CARE

Rejuvenation and antioxidation in 5 steps:

- **Enzymo-Algae Antioxidant Cleansing Milk For Face & Eyes** (CD0124, 200ml)
- **AGE Toning Mist Anti-Glycation Antioxidant For Face & Eyes** (CD0224, 200ml)
- **Cellular Anti-Ageing DNA-Day Cream SPF20 UVA/UVB** (CD1458, 50ml)
- **AGE Collagen Repair DNA-Night Cream Anti-Glycation** (CD1460, 50ml)
- **Cellular Anti-Ageing DNA-Cream For Eyes De-Puff Anti-Dark Cirkles** (CD0612, 30ml)



## INNOVATIVE ACTIVE INGREDIENTS:

- Ephermer™ - ephemeral algae stem cells (the world's first extraction technology)
- Royalepigen 5 - encapsulated pentapeptide 48, inspired by epigenetics
- Anti-Age Collagen Repair - a complex of carnosine peptide, vitamin B<sub>3</sub> (niacin) and extract from the exotic plant quinoa
- City Guard™ - sea water formula with biopterin
- Syn-Eye - rejuvenating complex with procollagen tripeptide, hyaluronic acid and microalgae extract
- Rich formulas of marine origin: triple helix collagen, elastin, glycogen, sea algae extracts

**Treatment application: PDT / LED laser or microneedle mesotherapy, needle-free or manual mesotherapy**



CHANTARELLE  
Laboratory Derm Aesthetics

# RED STOP

Couperose & Rosacea & Sensitive Skin

BEAUTY TREATMENT  
HOME CARE

**RED STOP** is a unique all-year-round dermo care designed especially for the skin with dilated capillaries - **COUPEROSE** and sensitive, with symptoms of rosacea, prone to redness and irritation - **ROSACEA SENSITIVE SKIN**

## SPECTACULAR EFFECTS

- ✓ reduction of erythema, symptoms of irritation and foci of vascular changes
- ✓ sealing and shrinking the blood vessels
- ✓ improvement of microcirculation
- ✓ restoration of the epidermal barrier function
- ✓ moisturising and soothing the skin
- ✓ strengthening resistance to stress and self-regeneration
- ✓ antibacterial and anti-inflammatory effect
- ✓ rejuvenation and improvement of skin condition



Year-round dermocuration with lactobionic, azelaic and gluconolactone acids





CHOOSE THE  
TREATMENT FOR  
THE NEEDS  
OF YOUR SKIN

## TREATMENT INDICATIONS

- **COUPEROSE** – couperose skin, prone to redness, redness, symptoms of inflammation and a symptom of skin stress
- **ROSACEA SENSITIVE SKIN** – skin with rosacea symptoms, papules and pimples, dry, burning, excessively reactive to external stimuli



YOUR HOME  
DAILY  
RITUALS

## RED STOP - HOME CARE

- Anti-Redness Cleansing Milk (CD0109, 200ml)
- Anti-Redness Calming Toner Alcohol-Free Isotonic Water (CD0210, 200ml)
- Couperose PHA Acid Day Cream SPF25 UVA/UVB (CD1327, 50ml)
- Couperose PHA ACID Night Cream (CD1328, 50ml)
- Rosacea AzA Acid Day Cream SPF35 UVA/UVB  
Anti-Bacterial Calming Anti-Redness (CD1329, 50ml)
- Rosacea AzA ACID Night Cream (CD1330, 50ml)
- Redness Reducer Calming Concentrate (CD1325, 30ml)
- Anti-Redness & Anti-Rosacea Mask Anti-Bacterial Cool Calming (CD0814, 50ml)



## INNOVATIVE ACTIVE INGREDIENTS:



- **LACTOBIONIC ACID** antioxidant acid that stimulates skin renewal and moisturizes
- **GLUCONOLACTONE** strongly moisturizes, strengthens the epidermal barrier and accelerates regeneration
- **AZELAIC ACID** has antibacterial properties, reduces the symptoms of inflammatory changes
- **TI-RUTIN** antioxidant flavonoid, enhancing flexibility and blood vessels
- **VECTICELL C** - vitamin C complex in capsules. It has anti-radical, photoprotective and anti-aging properties
- **ALLANTOIN VC** - a complex of vitamin C with allantoin with whitening and antioxidant properties, anti-aging and soothing
- **STRESS-BLOCKERS** stimulates the production of beta-endorphins and has an anti-stress effect on the skin
- **SKIN MATRIX** (baicalin) activator of the telomerase gene, slows down the cell aging clock
- **INFRA-RECOVER DNA** protects against IR radiation and HEV blue light





# IDEAL PURE

BEAUTY TREATMENT  
HOME CARE



Year-round line of specialised formulations reducing excess of sebum and inflammatory symptoms, with moisturising and antibacterial properties for oily and seborrheic skin, with symptoms of youth and adult acne vulgaris, as well as comedones and enlarged pores.

## Effects IDEAL PURE

- ✓ regulates sebum secretion without disturbing the natural bacterial flora
- ✓ unblocks sebaceous ducts, reduces comedones and systematically narrows the pores
- ✓ regulates keratinisation of the epidermis and increases skin hydration
- ✓ alleviates irritation and symptoms of inflammation as well as reducing swelling
- ✓ has antibacterial and anti-inflammatory properties



**The active base of the line is the original sebo-regulating ingredients and anti-seborrhoea with activity against acne-causing bacteria.**





## YOUR HOME DAILY RITUALS

### IDEAL PURE - HOME CARE

- **Anti-Bacterial Herbal Cleansing Gel** with plant extracts and delicately cleansing betaine (CD0115, 200ml)
- **Anti-Bacterial Herbal Toner** with an original complex of plant extracts (CD0215, 200ml)
- **Poreless Purifying BHA-PHA Lotion Anti-Comedone** with salicylic acid and gluconolactone to reduce blackheads, cleansing pores (CD0516, 100ml)
- **Regulating Poly-Derm Day Cream SPF20 UVA/UVB** to balance the skin microbiome (CD1375, 50ml)
- **Anti-Bacterial GLUCO-SALIC ACID NIGHT CREAM** with salicylic acid and gluconolactone (CD1376, 50ml)



### INNOVATIVE ACTIVE INGREDIENTS

- **PUREPORE** reduces the secretion of sebum and reduces the amount, diameter and size of the pores. Mattifies oily skin, provides a homogeneous and radiant look
- **TRIKENOL** a complex of Manuka tree, willow and burdock extracts enriched with salicylic acid, reduces the overproduction of sebum and unblocks the sebaceous channels
- **RAMISEBUM** liposomal anti-acne complex with PCA zinc, which regulates the secretion of sebum, and with PCA copper, which prevents collagen degradation and the formation of acne scars
- **SALICYLIC ACID** antibacterial and anti-inflammatory, cleansing the sebaceous canals. Has an exfoliating effect, removes callous epidermal cells. Regulates skin cell renewal
- **GLUCONOLACTONE** strongly moisturizes and protects against free radicals. It stimulates cell regeneration and strengthens skin resistance to aggressive external factors
- **MANDELIC ACID** regulates the secretion of sebum, has antibacterial and anti-irritation properties. It rejuvenates, moisturizes and restores the water-lipid balance
- **AZELAIC ACID** reduces the symptoms of inflammatory changes such as lumps, papules, redness and erythema. It lightens discoloration and scars, has antibacterial properties
- **AZELOGLYCINA** a modern combination of azelaic acid and glycine amino acids with intense action moisturizing, soothing and anti-inflammatory
- **The active formula is enriched by:** thermal mud, extracts of soapwort, burdock, sage, lemon, ivy, bladderwrack, watercress, hamamelis, amla, bearberry, macadamia oil, avocado, shea butter and urea







CHANTARELLE  
Laboratory Derm Aesthetics



# RETINOICAL PURE

BEAUTY TREATMENT  
HOME CARE

For oily and acne skin with massive bacterial inflammatory changes Retino-Pept peptide acting as retinoic acid & Ferulic Acid. Antibacterial and anti-acne treatment for oily and seborrheic skin with massive symptoms of inflammatory changes connected with acne vulgaris and adult acne.

## Effects RETINOICAL PURE

- ✓ reduces symptoms of inflammatory changes and skin discolouration
- ✓ minimises pores
- ✓ evens the tone of scars and skin surface irregularities



This treatment is recommended especially for skin that does not tolerate acid treatment, which is most commonly performed on oily skin, and as an effective therapy when there are contradictions for using retinoic acid.



## YOUR HOME DAILY RITUALS

## RETINOCAL PURE - HOME CARE

- **Anti-Bacterial Herbal Cleansing Gel** with plant extracts and delicately cleansing betaine (CD0115, 200ml)
- **Anti-Bacterial Herbal Toner** with an original complex of plant extracts (CD0215, 200ml)
- **Poreless Purifying BHA-PHA Lotion Anti-Comedone** with salicylic acid and gluconolactone to reduce blackheads, cleansing pores (CD0516, 100ml)
- **Retinocal Pure Cream** for night against acne symptoms and massive inflammatory changes (CD1434, 50ml)



## INNOVATIVE ACTIVE INGREDIENTS

- **RETINO-PEPT** an advanced peptide with the anti-ageing properties of retinoic acid, the most powerful anti-ageing ingredient among retinoids, without its undesired effect on the organism. Has anti-inflammatory properties and reduces the size of skin pores. Regulates keratinisation of epidermis, brightens scars and skin discolouration and improves the blood flow. At the same time, stimulates the production of procollagen I, improves elasticity of the skin and facial contours, reduces wrinkles, improves the structure and epidermal cohesion and brightens the skin tone. The effectiveness of this ingredient in blocking the synthesis of metalloproteinases MMP-1 and restoring an appropriate level of procollagen I has been proven.
- The active formula is enriched by: vitamin E, extracts of saponaria, calendula, cornflower, cypress, hamamelis, thistle burdock, sage, lemon, ivy, bladder wrack, watercress, avocado oil, shea butter, allantoin, beeswax, UVA/UVB filters





# LIFT PEPTANGO R

BEAUTY TREATMENT  
HOME CARE



Innovative treatment line based on advanced peptide formulas the latest generation - a peptide with the rejuvenating effectiveness of retinoic acid, a peptide that mimics the action of snake venom and a low-molecular peptide complex with targeted anti-wrinkle action, smoothing and increasing skin elasticity.

## LIFT PEPTANGO R EFFECT

- ✓ strengthened cohesion and skin density
- ✓ increased elasticity and springiness
- ✓ visible reduction of mimic and age wrinkles
- ✓ improvement of face contours
- ✓ skin tone brightening
- ✓ correction of skin around the eyes 3 in 1:
  - drooping upper eyelid reconstruction,
  - reduction of wrinkles,
  - brightening of dark circles under the eyes

**The effects of the stimulating effect of the treatment are multiplied thanks to the laser photodynamic PDT application or sonophoresis.**







YOUR HOME  
DAILY RITUALS

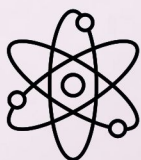
## LIFT PEPTANGO R - HOME CARE

- **Lift Peptide Day Cream SPF20 UVA/UVB**, firming, anti-wrinkle (CD1440, 50ml)
- **Lift Peptide Night Cream with innovative peptides**, regenerating, smoothing, firming (CD1441, 50ml)
- **Peptizone Lift Serum 26.8% Face & Neck Concentrated**, for the reduction of wrinkles and improvement of the facial contour (CD1442, 30ml)
- **Lift Peptide Eye Contour Cream Eyelid - 3-in-1 correction without a scalpel** of drooping eyelids, wrinkles and reduction of bruises (CD0635, 15ml)



## INNOVATIVE ACTIVE INGREDIENTS

- **RETINO-PEPT** with the rejuvenating effectiveness of retinoic acid. Stimulates the synthesis of collagen I, improves the cohesion and structure of the epidermis, strengthens the skin's elasticity.
- **SYNPEPT 2-Peptide** strengthens the dermal and epidermal junction (DEJ) that maintains the skin's integrity proper and epidermis, restoring its firmness and elasticity.
- **SYNVEL 3-Peptide** - a low molecular weight neuropeptide imitating the action of the toxin - snake venom. It shallows mimic wrinkles by inhibiting the vibrations of expression muscles.
- **MATRIXYL 3-Peptide** strong anti-wrinkle peptide, improves hydration, density and firmness and skin elasticity, face color and oval.
- **BEAUTIFEYE™** three-active formula rejuvenating the entire skin area around the eyes: 1. lifts a fold upper eyelid, 2. reduces "crow's feet" in the corners of the eyes and 3. brightens dark circles.
- **FILMLIFT PROTECTOR** - biomimetic natural glucopolymers give a natural lifting and smoothing effect, has anti-aging properties.
- **LIOSLIM** significantly improves skin elasticity, smoothes unevenness and reduces swelling and the thickness and volume of the skin.
- **PHYTIC ACID** gently exfoliates the epidermis, accelerates cell renewal, has an illuminating and brightening effect.
- The active formula is enriched by: red coral algae, hyaluronic acid, extracts of bearberry (arbutin), bamboo, green tea, calendula, horse chestnut, rose moschata oil, corn, macadamia, avocado, shea butter and vitamins.





CHANTARELLE  
Laboratory Derm Aesthetics

# NUTRI MAXX

BEAUTY TREATMENT  
HOME CARE

Comprehensive, in-depth repair program - regeneration and hydration for all types of damaged skin with signs of ageing and wrinkles, for sagging, mature and tired skin without energy and with unhealthy skin tone. It aims to increase the energy of ATP cells and restore the proper mechanisms of skin regeneration.

## LINE FOR SKIN IN NEED OF STRONG REGENERATION AND STIMULATING CELLULAR METABOLISM

- ✓ intensively rejuvenates and repairs the skin
- ✓ slows down cell ageing
- ✓ restores skin firmness and fills in the wrinkles from the inside
- ✓ ensures optimum hydration and stimulates the production of hyaluronic acid
- ✓ improves density and elasticity
- ✓ leaves the skin with younger, more energetic look with healthy skin tone

**The line is based on modern biotechnological ingredients and plants inspired by research in the field of genetic aging of the skin.**







## YOUR HOME DAILY RITUALS

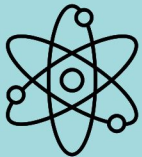
### NUTRI MAXX - HOME CARE

- **Hyaluronan Day Cream SPF25 UVA/UVB Anti-Ageing Regenerating & Moisturising**  
Hyaluronic-peptide anti-wrinkle day cream. Increases cellular energy to assimilate nutrients and inhibit the aging process (CD1335, 50ml)
- **Blue Retinol Night Cream Anti-Ageing Regenerating & Moisturising**  
The preparation has a strong regenerating, anti-wrinkle and energizing effect. It activates repair functions, restoring the skin's firmness and healthy color (CD1336, 50ml)
- **Hyalugene 12.5% Serum Face & Eyes Hyaluronan & 3-Peptide Wrinkle Filler**  
with peptides and hyaluronic acid. Has an active moisturising effect, repairing and lifting and delaying the aging processes (CD1337, 30ml)



### INNOVATIVE ACTIVE INGREDIENTS

- **BŁĘKITNY RETINOL** plant retinol, an equivalent of endemic algae, rich in proteins, lipids, saccharides and vitamins, stimulates keratinisation and renewal processes, smoothes and improves skin tone.
- **MATRIXYL 3-Peptide** strong anti-wrinkle peptide, improves hydration, density, skin firmness and elasticity, face color and oval
- **HYA-STIM 3-Peptide** increases the synthesis of hyaluronic acid, strengthens the matrix structure collagen, which increases the elasticity and elasticity of the skin
- **ATP STIM** stimulates and increases cell energy. Reduces the signs of skin fatigue, improves its vitality
- **HYALURONIC ACID** with different particle sizes and thus penetrates to different levels the skin, deeply moisturizing it and creating a protective occlusive layer
- **The active formula is enriched with:** red coral algae, rosemary and hop extracts, hamamelis, sage, horsetail, lemon, Asian pennywort, pine, horse chestnut, amla, lemon balm, sea buckthorn, sea fennel, green tea, bearberry, butcherberry, cornflower, borage, avocado, rose moschata oil, corn oil, avocado, shea butter and vitamins







CHANTARELLE  
Laboratory Derm Aesthetics



## ESTRINI 50+

BEAUTY TREATMENT  
HOME CARE

Intensively rejuvenating programme for mature women aimed at the renewal of skin sculpture and structure. Provides strong-action fundamental youth ingredients to skin requiring "increasing skin density", which boosts elastic supporting fibres' re-structuring processes and increases DEJ compactness, reducing deep structural wrinkles, restoring moisture and elasticity as well as leaving skin luminous.

### **ESTRINI 50+ Effects**

- ✓ strengthens and rebuilds collagen fibres
- ✓ reduces wrinkle depth and volume
- ✓ smoothes skin with "glamour" effect
- ✓ improves the skin's ability to stretch and elasticity
- ✓ models the contour and improves vitality
- ✓ brightens and moisturises
- ✓ improves micro-circulation



**ESTRINI 50+ is a rejuvenating program with phytoestrogens aimed at rebuilding the sculpture and structure of the skin of mature and menopausal women**



YOUR HOME  
DAILY RITUALS

## ESTRINI 50+ - HOME CARE

- **Fundamental Youth Day Cream SPF20 UVA/UVB Anti-Ageing Skin Re-Sculpture** strengthens skin elasticity, blood circulation, evens the skin colour (CD1380, 50ml)
- **Fundamental Youth Night Cream 50+ Regenerating Anti-Wrinkle** with low molecular peptides, moisturising and improving skin elasticity (CD1398, 50ml)
- **Fundamental Youth Concentrate 26% Pro-Collagen Skin Re-Sculpture** reducing ageing symptoms on face skin, around eyes and lips (CD1381, 30ml)
- **Advanced Bust & Body Cream Fundamental Youth Skin Re-Sculpture** strengthens skin structure, moistures, increases firmness and elasticity (CD1777, 200ml)



## INNOVATIVE ACTIVE INGREDIENTS:

- **PHYTRODIAL** a powerful formula of phytoestrogens, stimulates the synthesis of collagen IV and VII, strengthens the connection dermal and epidermal DEJ, increases microcirculation. It improves elasticity, firmness, blood circulation and skin tone
- **MATRIXYL 3-Peptide** strong anti-wrinkle peptide, improves hydration, density and firmness and the elasticity of the skin, the color and the oval of the face
- **SYNPEPT 2-Peptide** strengthens the dermal and epidermal junction (DEJ) that maintains the integrity of the dermis and the epidermis, restoring its firmness and elasticity
- **MENOSKIN** obtained from the Poria Cocos mushroom used in traditional Chinese medicine, it stimulates production of hyaluronic acid, collagen IV and proteins
- **ALLANTOIN VC** vitamin C complex with allantoin. It combines whitening and antioxidant properties and anti-aging vitamin C with the soothing and moisturizing effect of allantoin
- **VITAMIN D BOOSTER** – vitamin D booster, restores the functions of the vitamin D receptor (VDR), accelerates regeneration the protective barrier of the skin
- The active formula is enriched by: red coral algae, red algae carrageen moss, high molecular weight hyaluronic acid, sandalwood oil Album





# C'MODULAR AGE

BEAUTY TREATMENT  
HOME CARE



Anti photo-ageing and hyper-pigmentation dermo-therapy for skin with ageing symptoms caused by UV radiation, with wrinkles and hyper-pigmentation, with excessive epidermis keratinisation, rough, dry and dehydrated, damaged by excessive solar exposure, also for skin with open pores, with blackheads, with acne, hyper-pigmentation and acne scars and for couperose skin.

## C'MODULAR AGE Effects

- ✓ strengthenings of elastic fibres and collagen structure, and stimulates of collagen synthesis
- ✓ smoothes deep wrinkles, lines and mimic wrinkles
- ✓ reduces pigmentary changes, hyper-pigmentation and spots, including sun and acne spots
- ✓ increases antioxidant and anti-radicals protection
- ✓ reduces the symptoms of irritation and skin redness



**This innovative rejuvenating and brightening treatment is rich in intensive active ingredients, such as stable forms of vitamin C, state-of-the-art brightening and anti-oxidant ingredients as well as instant wrinkle filler GABA.**





YOUR HOME  
DAILY RITUALS

## C`MODULAR AGE - HOME CARE

- **Revive C 6% Day Cream SPF30 UVA/UVB** rejuvenating and brightening day cream with vitamin C 6% and antioxidant skin renewal. (CD1343, 50ml)
- **Revive C 8% Brightening Night Cream** rejuvenating and brightening night cream with vitamin C 8% and antioxidant skin renewal (CD1344, 50ml)
- **Revive C 20% Serum** rejuvenating and brightening serum with vitamin C 20% and antioxidant skin renewal (CD1345, 30ml)
- **GABA Extreme Wrinkle Filler** extreme concentrate - wrinkle filler with a unique formula of selected active ingredients (CD1342, 30ml)



## INNOVATIVE ACTIVE INGREDIENTS:

- **VITAMIN C** a strong antioxidant, a great promoter of collagen synthesis, stimulates skin elasticity and firmness
- **VECTICELL C** Liposomal-encapsulated concentrated vitamin C
- **ALLANTOIN VC** vitamin C complex with allantoin
- **GABA** gamma-aminobutyric acid a neuroactive rejuvenating ingredient for immediate and long-lasting reduction of wrinkles as well as repair of collagen, hydration and the skin's protective barrier
- **HYA-STIM 3-PEPTIDE** hyaluronic acid synthesis stimulator -next-generation tripeptide with the effect of firming and smoothing wrinkles from the inside, shapes the face oval
- **SUPEROX-C™** - Australian Kakadu plum extract with a very high standardized content of stable vitamin C, which is resistant to high temperature
- **CAPSULATED CURCUMIN** in a gradual release nanocarrier. It inhibits the reproduction of melanin by limiting the activity of tyrosine
- **MELA-GINSENG** Korean ginseng extract, standardized for ginsenosides Rb3, lightens discoloration by inhibiting tyrosinase and melanogenesis
- **ACTIVE FORMULA ENRICHED:** hyaluronic acid, extracts of horse chestnut, rosemary, hop, hamamelis, sage, horsetail, lemon, asiatic pennywort, pine, emblica, bearberry (arbutin), rock samphire, avocado oil, macadamia oil, corn oil, wild roses oil, shea butter, allantoin, beeswax and vitamins A, E, H, B<sub>5</sub>, inositol





# THERMO-MODELLING

BEAUTY TREATMENT  
HOME CARE



Line with strong anti-cellulite and slimming effects. Systematic use of preparations gives spectacular effects, such as: reduction in the amount and change of the structure of adipose tissue, modeling imperfections of selected parts of the body and eliminating the "orange peel" effect. Preparation also significantly improves the density, firmness and hydration of the skin.

## Effects of THERMO-MODELLING

- ✓ slimming and body shaping
- ✓ cellulite reduction
- ✓ strengthening firmness, elasticity and density of the skin
- ✓ restoration of skin homeostasis
- ✓ moisturizing and smoothing the skin

The effects of the stimulating effect of the treatment are multiplied thanks to the application thermodynamic device.





YOUR HOME  
DAILY RITUALS

## THERMO-MODELLING - HOME CARE

- **Tea Body Peel** it slims and works anti-cellulite, cleanses and stimulates skin regeneration. It stimulates metabolism in the skin and subcutaneous fatty tissue (CD1880, 200ml)
- **Slim-Esthetic Concentrate** slimming concentrate in gel, non-perfumed, modeling, stimulating circulation. Reduces the amount and changes the structure of adipose tissue (CD1882, 100ml)
- **Slim-Esthetic Cinnamon Cream Thermo-Active** slimming cinnamon body cream that shapes, firms and stimulates circulation. Applied by massage for body shaping during home care (CD1881, 200ml)
- **Cellu-Esthetic Concentrate** non-perfumed, anti-cellulite body concentrate reduces cellulite, smoothes and firms body skin (CD1884, 100ml)
- **Cellu-Esthetic Grapefruit Cream Thermo-Active** anti-cellulite and firming grapefruit body cream, reduces cellulite, smooths and firms body skin, reduces swelling (CD1883, 200ml)

## INNOVATIVE ACTIVE INGREDIENTS:



- **LIOSLIM** is a combination of two high-purity plant molecules that together prevent fat accumulation. It significantly improves skin elasticity, smoothes unevenness, reduces swelling, and reduces the thickness and volume of the skin.
- **STRETCH-STOP** reduces the visibility of stretch marks, but also improves the condition of the skin. Visible improvement after just 28 days. It combines two plants used in traditional Chinese medicine to improve Qi, "vital energy flow."
- **GLUCONOLACTONE** non-irritating acid, strongly moisturizes, strengthens the epidermal barrier. Accelerates regeneration, regulates keratinization. Strengthens the skin's resistance to aggressive external factors. For year-round application.
- **AZELOGLICINE** a modern combination of azelaic acid and glycine amino acids with intense moisturizing, soothing and anti-inflammatory properties. Increases the flexibility of supporting fibers.
- **High-molecular weight hyaluronic acid 1MDa** with a unique ability to bind water in the epidermis, strongly moisturizes and smoothes the skin, protects against loss of elasticity. Creates an occlusive protection of the epidermis.
- **PLANT EXTRACTS** of: red coral algae, red algae carrageen moss, green tea, bilberry, burdock, saponaria, papaya, sage, butcher's broom, eleutherococcus barbed, lavandula angustifolia, populus nigra, guarana, ivy, artemisia, black cohosh ginseng, cat's claw, arnica montana, chestnut, hamamelis, hypericum, grapevine. and caffeine, silk protein, hydroxyproline dipalmitate, castor oil, avocado oil, shea butter, beeswax, vitamin E







# PDT MASTER®

## laser photodynamic treatments

BEAUTY TREATMENT

**Unique MAGNETO-LED-LASER device combines technologies:**

- **LASER R light – low-level diode laser**
- **LED light**
- **PULSED MAGNETIC FIELD**

Innovative photodynamic treatments with the PDT MASTER® laser are performed in the best beauty salons. These treatments are based on photosensitive preparations with bio-chromophores and advanced active ingredients.

### LED/LASER LIGHT PHOTOTHERAPY

The LED/LASER light emitted by PDT MASTER® penetrates cellular membranes and mitochondria (energy centres in a cell) and provides energy to cells, stimulating their regeneration. This boosts the collagen and elastin synthesis in the skin as well as the blood and lymph flow. The natural immunological processes of the skin are also boosted.

### THERAPY USING PULSED MAGNETIC FIELD

The magnetic field intensifies the therapeutic effect in tissues and has strong bio-stimulating properties; stimulates the blood and lymph flow, which improves oxygenation of the skin also making it better nourished; improves absorption of active ingredients contained in the products; stimulates fibroblasts to cause the collagen and elastin synthesis; has anti-inflammatory properties; accelerates tissue regeneration processes.





A WIDE RANGE OF  
TREATMENTS FOR  
YOUR SKIN

## PDT CHANTARELLE PHOTODYNAMIC TREATMENTS

- LASER CHEMICAL PEELS
- FIRM LASER PLATINUM MASSAGE
- TREATMENTS FOR A SELECTED SKIN PROBLEM
- STRONG REJUVENATING AND LIFTING TREATMENTS



## SPECTACULAR, IMMEDIATELY VISIBLE TREATMENT EFFECTS - head-to-foot treatments

reduction of wrinkles  
remodelling of face oval  
minimisation of effects of photo-damage  
and photo-ageing  
reduction of discolourations  
increase in hydration and elasticity  
prolongation of aesthetic treatment effects  
sealing of blood vessels  
reduction of erythema  
reduction of symptoms of rosacea  
reduction of symptoms of acne, also adult acne



elimination of irritations  
reduction of cellulite and stretch marks  
reduction of adipose tissue deposits  
reduction of swelling  
stimulation of healing of discolourations  
due to broken blood vessels and bruises  
anti-inflammatory, anti-bacterial,  
and anti-fungal properties  
stimulation of faster healing and regeneration  
stimulation of faster hair growth



# THERMOLED MASTER®

## thermoactive treatments

BEAUTY TREATMENT

**A MODERN NON-INVASIVE DEVICE DESIGNED  
FOR INTEGRATED TREATMENTS  
IN THE BEST BEAUTY SALONS**

**THERMOLED MASTER® combines modern technologies:**

- THERMO thermal method
- LED magneto-phototherapy
- pulsating magnetic field
- rotating magnetic field
- targeted PDT photodynamic therapy

**SPECIAL ADVANTAGES OF TREATMENTS WITH THERMOLED MASTER®**

- Immediate effects - visible after the first treatment
- Long-term biostimulation effect
- Non-invasive treatment procedures - NO SCALPEL, NO PAIN, NO STRESS
- Possibility of immediate return to normal activity after the procedure
- Safety and comfort
- Minimizing side effects compared to invasive methods
- Can be combined with other treatments in combination therapies







A WIDE RANGE OF  
TREATMENTS FOR  
YOUR SKIN

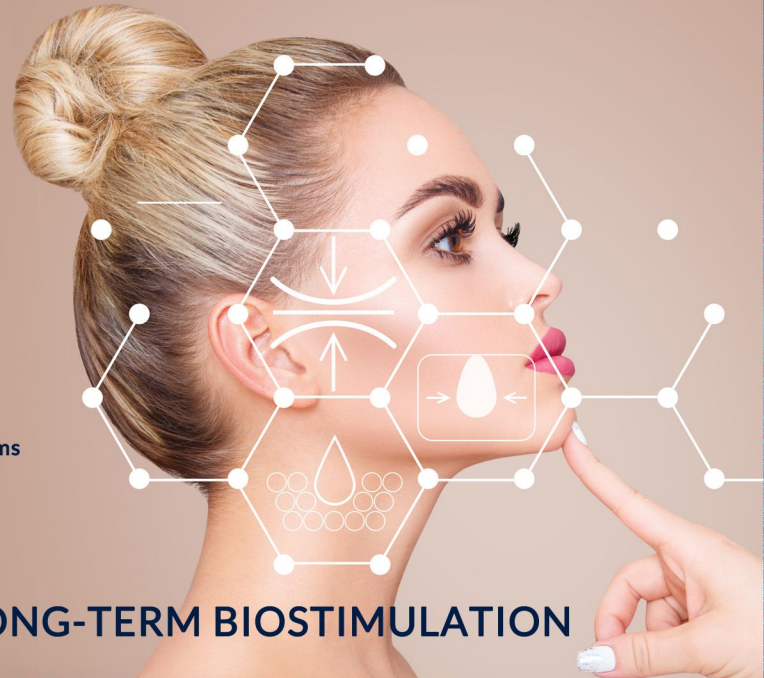
## INDICATIONS FOR THERMO TREATMENTS

- modeling and lifting treatments, anti-aging, against deep wrinkles
- for dry, rough skin with irritation symptoms
- for oily, problematic skin with symptoms of inflammation
- for sensitive skin with redness
- for skin with discoloration, uneven tone and scars
- special programs for the skin around the eyes



## SPECTACULAR IMMEDIATELY VISIBLE RESULTS

- modeling / lifting the oval of the face
- smoothing wrinkles
- modeling of local body parts
- reduction of discoloration
- alignment of skin tone and tone
- moisturizing, reducing roughness and irritation
- seborregulation and reduction of inflammatory symptoms
- reduction of swelling



IMMEDIATE EFFECTS + LONG-TERM BIOSTIMULATION

*We invite you to beauty salons, SPA facilities  
and aesthetic medicine clinics!*

**CHANTARELLE Laboratory Derm Aesthetics** invites you to selected beauty salons for innovative treatments, advanced chemical peels, laser photodynamic PDT treatments, thermoactive programs, microneedle and needle-free mesotherapy, as well as sono- and ionophoresis treatments.

### **CHEMICAL PEELINGS**

are a huge selection of acids with different exfoliation power, also acids for sensitive skin, vascular and PDT laser peelings. Chantarelle's offer also includes medical peelings with very high power.

### **PDT PHOTODYNAMIC TREATMENTS**

using a low-energy LLLT laser with a pulsating magnetic field. PDT programmes intended for phototherapy and targeted therapies for many skin problems and targeted anti-aging activities.

### **THERMO TREATMENTS**

for non-invasive modelling of the skin of the face and body with a thermo-laser with a rotating magnetic field. Thermoactive treatments enhance the effects of rejuvenation, depigmentation, scar reduction, fat reduction and cellulite.

### **NEEDLE-FREE AND MICRO-NEEDLE MESOTHERAPY TREATMENTS**

were used in treatments with growth factors for intensive regeneration and rejuvenation of the skin as well as for antioxidant skin detox and anti-glycation.

### **SONOPHERESIS AND IONOPHORESIS**

are treatments with the use of traditional cosmetic techniques for a wide spectrum of activity. They effectively support the penetration of active ingredients into the deeper layers of the skin.







CHANTARELLE  
Laboratory Derm Aesthetics



CHANTARELLE Laboratory Derm Aesthetics

Biuro Polska: Prof.Cosmetica,  
ul.Sierakowska 29, 05-092 Łomianki, Poland  
tel/fax: + 48 603 661 685,  
+48 22 610 43 10, +48 22 610 44 40

biuro@chantarelle.pl [www.chantarelle.eu](http://www.chantarelle.eu)

[www.facebook.com/CHANTARELLE.Laboratory.Derm.Aesthetics](https://www.facebook.com/CHANTARELLE.Laboratory.Derm.Aesthetics)

