



CHANTARELLE  
Laboratory Derm Aesthetics



# ACID TREATMENTS

BEAUTY SALON'S TREATMENTS

Chemical peels are effectively exfoliating aesthetic treatments that visibly repair and rejuvenate the skin. CHANTARELLE experts have developed a broad selection of chemical peels that not only exfoliate epidermis which is their fundamental task, but also help reduce skin problems in targeted skin therapies, even in the case of sensitive or problematic skin.



# WHAT MAKES CHANTARELLE CHEMICAL ACID PEELS SO SPECIAL?



## A BROAD RANGE OF CHANTARELLE CHEMICAL PEELS

Chemical peels are effectively exfoliating aesthetic treatments that visibly repair and rejuvenate the skin. CHANTARELLE experts have developed a broad selection of chemical peels that not only exfoliate epidermis which is their fundamental task, but also help reduce skin problems in targeted skin therapies, even in the case of sensitive or problematic skin.

- **A broad selection of chemical peels** – mono-peel and mixed-peel formulas with a wide scope of concentrations and pHs, dedicated for dermoaesthetics and medicine.
- **Innovative methods of application** – photosensitive peels used in PDT photodynamic treatments, application with sonophoresis, iontophoresis, also manually.
- **Gel peel formula** – allows for longer application and slow penetration (without fast evaporation) which ensures high effectiveness, at the same time with a lower risk of irritation. The gel formula also increases safety during the treatment, the preparation does not flow down and its application may be better controlled.
- **Laser chemical peels** in the Platinum Peel & Cure line with platinum for PDT photodynamic treatments. Modern preparations for treatments with LASER LLLT, LED or manually, contain acids and active ingredients selected for the skin problem, including platinum and natural bio-chromophores.
- **A special formula of all peels** enables penetration of the products into the skin through both transport channels: the water and the lipid channel pathways, regardless of their solubility, which increases their effectiveness.
- **Treatment schemes involving multilayer application of products where pH is gradually reduced with every next layer of the product** depending on the skin type and skin problem, reduce the risk of severe skin irritations, and ensure high effectiveness of the treatment at the same time.
- **CHANTARELLE experts have also prepared special peels** for problematic skin types, such as vascular skin, sensitive skin, reactive skin with symptoms of atopic dermatitis or rosacea, allergy-prone skin and skin not tolerating strong chemical peels.



## EFFECTS OF CHEMICAL PEEL PROCEDURES

- Removal of calloused, dead epidermis
- Stimulation of production of new skin cells
- Improvement in skin moisture
- Improvement in skin's blood supply
- Brightening of discolorations and spots
- Even skin tone
- Reduction of signs of sun damage
- Reduction of fine lines and deep furrows
- Improvement in skin elasticity and firmness
- Unclogging and normalisation of sebaceous glands
- Cleansing of comedones
- Reduction of acne changes
- Reduction of scars, including post-acne scars
- Reduction of stretch marks
- Easier absorption of cosmetic ingredients into the skin





# LACTIC ACID TREATMENT

**Lactic acid** stimulates the synthesis of ceramides – as one of the basic components of NMFs, it is a natural moisturising component. By decreasing water evaporation, it binds it in the epidermis and restores the tightness of hydrolipid barrier of the skin. Removes dead epidermal cells and activates mechanisms of cleansing, repair and regeneration. Smoothens wrinkles, brightens spots and discolorations, evens skin colour, reduces scars.

**M-Lactic Acid 30% pH 3.5 (CPo501)**

**M-Lactic Acid 40% pH 3.5 (CPo502)**

## EFFECTS:

### REGULATING THERAPY

- regulation and normalisation of sebum secretion
- cleansing of sebaceous ducts, balancing of moisture
- restoration of a healthy skin tone

### INTENSIVELY REJUVENATING THERAPY

- stimulation of moisturisation and collagen formation, reduction in minor wrinkles
- prevention against and inhibition of skin ageing processes

### SKIN RESURFACING THERAPY

- brightening and removal of discolorations and photo-discolorations
- reduction of scars and stretch marks in the red and white phase
- restoration of the healthy skin appearance

## INDICATIONS:

### REGULATING THERAPY

- oily, seborrheic skin, with open pores
- impure, prone to comedones

### INTENSIVELY REJUVENATING THERAPY

- poorly elasticised skin, with wrinkles
- dry, dull, without shine and a healthy tone

### SKIN RESURFACING THERAPY

- skin with discolorations and spots, also scars, stretch marks and structural imperfections



**CLASSIC  
CHEMICAL  
PEEL**



# LACTIC ACID TREATMENT

**Lactic acid** stimulates the synthesis of ceramides – as one of the basic components of NMFs, it is a natural moisturising component. By decreasing water evaporation, it binds it in the epidermis and restores the tightness of hydrolipid barrier of the skin. Removes dead epidermal cells and activates mechanisms of cleansing, repair and regeneration. Smoothens wrinkles, brightens spots and discolorations, evens skin colour, reduces scars.

**M-Lactic Acid 20% pH 1.7** (CP052950)

**M-Lactic Acid 40% pH 1.6** (CP053050)

**M-Lactic Acid 55% pH 0.9/MED** (CP051050)

**M-Lactic Acid 80% pH 0.3/MED** (CP051150)



## EFFECTS:

- stimulation of the production of collagen and elastin
- stimulation of hydration and elasticity
- reduction of wrinkles
- brightening of spots and discolorations
- restoring even skin tone
- reduction of scars, stretch marks and skin irregularities
- normalisation of keratinisation
- cleansing and minimisation of skin pores

## INDICATIONS:

- mature skin with wrinkles
- dry skin requiring hydration and renewal
- skin with keratinisation disorders
- flabby skin affected by loss of elasticity
- with photo ageing and pre-mature ageing
- with pigmentation spots – due to sun exposure and ageing
- with imperfections – scars, uneven skin texture



**CLASSIC  
CHEMICAL  
PEEL**



# AZELAIC ACID TREATMENT

**Azelaic acid** has anti-bacterial, anti-inflammatory and anti-comedogenic properties, normalises the process of keratinisation, reducing inflammations, redness and erythema. Acts as an 'eliminator' of free radicals, which activate inflammatory processes. Reduces skin discolorations (mainly melasma and post-inflammatory discolorations) and symptoms of rosacea. Does not trigger phototoxic and photoallergic reactions, can be used in the summer with SPF protection.

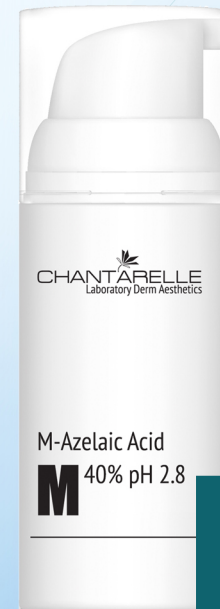
## M-Azelaic Acid 40% pH 2.8 (CP054450)

### EFFECTS:

- smoothed skin and even skin tone
- reduced discolourations after steroid and drug-induced acne, and acne
- reduced post-acne scars
- reduced sebum production
- regenerated and rejuvenated skin
- elimination of erythema and papules

### INDICATIONS:

- symptoms of rosacea -propensity to erythema, sensitive skin, atopic skin
- skin with shallow vascularisation
- symptoms of acne vulgaris
- skin with discolourations
- symptoms of psoriasis
- folliculitis



**CLASSIC  
CHEMICAL  
PEEL**



# FERULIC ACID TREATMENT

**Ferulic acid** is a very strong antioxidant with anti-aging properties. has photoprotective properties. has anti-inflammatory properties. has depigmentating properties. Rebuilds skin matrix, stimulates the synthesis of collagen and elastin, strongly moisturises. IMPORTANT! Effectively absorbs radiation in the full UVA-UVB range up to high-frequency ultraviolet 450nm. Can be used all year round with proper SPF protection.

**M-Ferulic Acid 40% pH 2.2 (CP054550)**

**M-Ferulic Acid 50% pH 1.8 (CP054650)**

## EFFECTS:

- regulated epidermal keratinisation
- excellent hydration
- strengthened protective barrier
- increased skin tautness
- rejuvenation
- reduced post-sun exposure discolourations
- perfectly nourished and moisturised skin
- photo-protection and protection from free radicals

## INDICATIONS:

- dry, mature skin
- loss of firmness and elasticity
- wrinkles
- symptoms of acne vulgaris and post-acne scars
- skin requiring regeneration and whitening
- urban, dull, smoker skin



**CLASSIC  
CHEMICAL  
PEEL**



# LACTOBIONIC ACID TREATMENT

**Lactobionic acid** it has exfoliating properties but does not cause irritation. can be applied in sensitive and dry skin care, also in vascular skin with symptoms of erythema. Strengthens skin capillaries, reduces redness, it is recommended in reduction of dilated blood vessels (telangiectasia) and symptoms of rosacea. Strengthens epidermal barrier, has moisturising and anti-aging properties. Stimulates repair mechanisms (by stimulating collagen synthesis). It is an antioxidant, increases protection from harmful effects of UV radiation; can be used all year round with SPF protection.

## M-Lactobionic Acid 50% pH 1.7 (CP054750)

### EFFECTS:

- strengthens capillaries and reduces erythema
- repairs the epidermal barrier
- moisturises and has an anti-ageing effect
- reinforces skin repair mechanisms
- stimulates collagen synthesis
- is a strong antioxidant
- increases protection against UV rays

### INDICATIONS:

- demanding, sensitive skin
- vascular skin, with propensity to redness
- skin with symptoms of atopic dermatitis (AD)
- skin with symptoms of seborrhoeic dermatitis (SD)
- dry, dehydrated skin



**CLASSIC  
CHEMICAL  
PEEL**





# CITRIC ACID TREATMENT

**Citric acid** is a fruit acid belongs to the group of alpha-hydroxy acids (AHA). Citric acid has three carboxylic groups and one hydroxyl group - it can be considered as both alpha and beta-hydroxy acid. Advantageous influence on collagen of blood vessels (reduction in their fragility and increase in their elasticity). reduced discolourations. Stimulation of production of procollagen (basic collagen structure). Increased firmness thanks to stimulation of GAGs (glycosaminoglycans): chondroitin sulfate and hyaluronic acid.

## M-Citric Acid 55% pH 1.7 (CPo54950)

### EFFECTS:

- normalisation of keratinocyte proliferation
- deep and thorough skin cleansing
- smoothed wrinkles and fine furrows
- reduced discolourations
- stimulation of dermal growth
- advantageous influence on collagen of blood vessels (reduction in their fragility and increase in their elasticity)
- stimulation of production of procollagen
- increased firmness thanks to stimulation of GAGs (glycosaminoglycans): chondroitin sulfate and hyaluronic acid
- reduction in symptoms of „photo-ageing”
- skin regeneration, repair and whitening

### INDICATIONS:

- impurified skin requiring refreshing
- discolourations and spots of various etiologies
- dry, rough, mature skin
- lack of firmness and wrinkles
- combination skin, open pores



M-Citric Acid  
**M** 55% pH 0.3

**CLASSIC  
CHEMICAL  
PEEL**



# PYRUVIC ACID TREATMENT

**Pyruvic acid** has sebostatic, dermoplastic and anti-microbe properties. May be applied onto pustules (pus-filled changes). With its ability to quickly penetrate into the dermis, it enables achieving spectacular aesthetic effects comparable to those achieved using TCA chemical peels. Regulates the functions of sebaceous glands, purifies skin pores. Brightens spots and discolourations. Has anti-ageing properties. Stimulates collagen and elastin production. Stimulates increase in skin elasticity and density. Smooths wrinkles and furrows.

**M-Pyruvic Acid 50% pH 1.6 (CP053750)**

**M-Pyruvic Acid 55% pH 1.5 (CP053850)**

**M-Pyruvic Acid 65% pH 1.3/MED (CP053950)**



## EFFECTS:

- regulates the functions of sebaceous glands, purifies skin pores
- brightens spots and discolourations
- has anti-ageing properties
- stimulates collagen and elastin production
- stimulates increase in skin elasticity and density
- smooths wrinkles and furrows
- reduces scars

## INDICATIONS:

- oily skin, melasma, photo-ageing
- scars, melasma, seborrhoeic dermatitis, oily skin, inflammatory and non-inflammatory changes, wrinkles, accelerated ageing
- deep scars, deep wrinkles and furrows, stretch marks, ageing





# MANDELIC ACID TREATMENT

**Mandelic acid** is obtained through the hydrolysis of bitter almonds extract. Recommended for every type of skin, especially with symptoms of inflammation, for combination and oily skin with seborrhea, with symptoms of acne and adult acne. Has the strongest anti-bacterial properties among all AHAs, regulates the secretion of sebum, has anti-bacterial and anti-inflammatory properties. Brightens discolorations. Stimulates fibroblasts, rejuvenates, moisturises and restores the hydro lipid balance. Does not make the skin sensitive to UV rays.

## Mandelic acid 40% pH 1.5 (CP051850)

### EFFECTS:

- strong anti-bacterial and anti-inflammatory action
- reduction of excessive keratinisation
- normalisation of sebaceous glands
- rejuvenation, revitalization, reduction of signs of skin photo-ageing and ageing
- moisturising, restoration of hydro-lipid balance
- skin luminising, reduction of discolourations and even skin tone

### INDICATIONS:

- combination skin with hydro-lipid imbalance
- dry skin requiring hydration
- seborrheic skin requiring normalisation of sebum production
- skin with acne and adult acne
- skin requiring reduction of inflammatory and irritation symptoms
- photo-ageing, ageing and reduced elasticity
- uneven, dull skin tone and discolourations



**MANDELIC PEEL**

**Formula  
Mandelic Acid  
40% pH 1.5**

**CLASSIC  
CHEMICAL  
PEEL**



# KOJIC AND LACTIC ACID TREATMENT

**Kojic acid** has clinically proven decolorisation properties, effectively brightens existing discolorations. Blocks the activity of tyrosinase (the enzyme responsible for the production of melanin), preventing the skin from the appearance of new discolorations. Has anti-bacterial properties and prevents the skin from the appearance of free radicals.

**Lactic acid** stimulates the synthesis of ceramides – as one of the basic components of NMFs, it is a natural moisturising component. By decreasing water evaporation, it binds it in the epidermis and restores the tightness of hydrolipid barrier of the skin. Removes dead epidermal cells and activates mechanisms of cleansing, repair and regeneration. Smoothens wrinkles, brightens spots and discolorations, evens skin colour, reduces scars.

## M-Kojic & Lactic acid 35% pH 1.6 (CP053450)

### EFFECTS:

- whitening of discolourations and spots of various etiologies
- restoring even skin tone
- restoring even colour after uneven tanning and sun damage
- scar and stretch marks reduction
- rejuvenation, reduction of symptoms of ageing and photo-ageing

### INDICATIONS:

- ageing, photo-ageing and sun damage
- skin with spots and discolourations of various etiologies: lentigines, sun exposure, age, liver spots, freckles, epidermal melasma
- skin with structural irregularities and uneven tone



**CLASSIC  
CHEMICAL  
PEEL**

# KOJIC AND CITRIC ACID TREATMENT

**Kojic acid** has clinically proven decolorisation properties, effectively brightens existing discolorations. Blocks the activity of tyrosinase (the enzyme responsible for the production of melanin), preventing the skin from the appearance of new discolorations. Has anti-bacterial properties and prevents the skin from the appearance of free radicals.

**Citric acid** is a fruit acid belongs to the group of alpha-hydroxy acids (AHA). Citric acid has three carboxylic groups and one hydroxyl group - it can be considered as both alpha and beta-hydroxy acid. Advantageous influence on collagen of blood vessels (reduction in their fragility and increase in their elasticity). Reduced discolorations. Stimulation of production of procollagen (basic collagen structure). Increased firmness thanks to stimulation of GAGs (glycosaminoglycans): chondroitin sulfate and hyaluronic acid.

## M-Kojic & Citric acid 55% pH 0.3 (CP054850)

### EFFECTS:

- reduction in excessive epidermal keratinisation
- whitening and elimination of pigmentation spots of various etiologies
- purified and smooth skin
- protection from the formation of discolorations (inhibition of the activity of tyrosinase – the enzyme responsible for the formation of discolorations)
- brightened skin tone, restored luminous and fresh skin look

### INDICATIONS:

- skin with discolorations and uneven pigmentation
- skin dyschromia
- uneven texture, rough epidermis
- combination skin, thick, non-sensitive skin
- tired, dull skin, lacking oxygen



**CLASSIC  
CHEMICAL  
PEEL**



# LACTIC AND MANDELIC ACID TREATMENT

**Lactic acid** stimulates the synthesis of ceramides – as one of the basic components of NMFs, it is a natural moisturising component. By decreasing water evaporation, it binds it in the epidermis and restores the tightness of hydro-lipid barrier of the skin. Removes dead epidermal cells and activates mechanisms of cleansing, repair and regeneration. Smoothens wrinkles, brightens spots and discolorations, evens skin colour, reduces scars.

**Mandelic acid** is obtained through the hydrolysis of bitter almonds extract. Recommended for every type of skin, especially with symptoms of inflammation, for combination and oily skin with seborrhea, with symptoms of acne and adult acne. Has the strongest anti-bacterial properties among all AHAs, regulates the secretion of sebum, has anti-bacterial and anti-inflammatory properties. Brightens discolorations. Stimulates fibroblasts, rejuvenates, moisturises and restores the hydro lipid balance. Does not make the skin sensitive to UV rays.

**M-Lactic & Mandelic acid 33% pH 1.4 (CP053350)**

**M-Lactic & Mandelic acid 55% pH 0.7/MED (CP051250)**

## EFFECTS:

- intensive rejuvenation, lifting and smoothing
- stimulation of production of elastic fibres
- stimulation of elasticity, firmness and tightness
- brightening of skin tone and reduction of photo-dyscolorations
- moisturising, regulation of the hydro-lipid balance

## INDICATIONS:

- mature, flabby, thin, poorly elasticised skin
- with clear symptoms of ageing and mesh of fine lines
- with pigmentation spots
- very dry, scaling, “flaky” skin
- impure, with comedones, grey, dull and without shine
- with imbalanced keratinisation





# GLYCOLIC AND LACTIC ACID TREATMENT

**Glycolic acid** has the smallest particle of all AHAs therefore it easily penetrates into the skin. Stimulates the functions of alive skin cells, fibroblasts and the synthesis of collagen and elastin. Normalises the processes of keratinization of epidermis, moisturises and unclogs hair follicles openings, preventing the appearance of first non-inflammatory symptoms of acne. Reduces wrinkles, discolorations, scars, keratinisation dysfunctions. Leaves the skin more elastic and firm, evens the skin tone.

**Lactic acid** stimulates the synthesis of ceramides – as one of the basic components of NMFs, it is a natural moisturising component. By decreasing water evaporation, it binds it in the epidermis and restores the tightness of hydrolipid barrier of the skin. Removes dead epidermal cells and activates mechanisms of cleansing, repair and regeneration. Smoothens wrinkles, brightens spots and discolorations, evens skin colour, reduces scars.

**M-Glycolic & Lactic acid 40% pH 1.6 (CP053250)**

**M-Glycolic & Lactic acid 70% pH 0.5/MED (CP051350)**



## EFFECTS:

- stimulates cellular regeneration, synthesis of elastic fibres and moisturising
- smoothens wrinkles and re-firms skin
- normalizes epidermal keratinization processes and reduces horny layer
- regulates functions of sebaceous glands, reduces production of sebum and cleanses pores
- reduces discolouration and scars
- lightens and evens the skin tone

## INDICATIONS:

- every skin type, especially with signs of sun damage
- photo-ageing with discolorations and uneven skin tone
- mature, with wrinkles and poorly elasticized skin
- dry and dried
- oily and acne skin, impure, with comedones and scars



**CLASSIC  
CHEMICAL  
PEEL**



# IDEAL PURE SALICYLIC ACID TREATMENT

**Salicylic acid** has antibacterial and anti-inflammatory properties, unclogs sebaceous duct, blocked by sebum. reduces comedones and symptoms of inflammation, reduces the appearance of new ones. also stimulates cellular regeneration of the skin, has exfoliating properties thanks to relaxing cell junctions, removes the layers of dead, cornified skin cells. Does not cause skin dryness and effectively cleanses of dry skin affected by numerous comedones. Can cause an allergic response – an interview with the client is necessary.

## Peel Formula BHA-PHA Acid 20% pH 3.5 (CPo410)

### EFFECTS:

- regulates sebum secretion without disturbing the natural bacterial flora
- unblocks sebaceous ducts, reduces comedones and systematically narrows the pores
- regulates keratinisation of the epidermis and increases skin hydration
- alleviates irritation and symptoms of inflammation as well as reducing swelling
- has antibacterial and anti-inflammatory properties

### INDICATIONS:

- excessive sebum secretion and skin dehydration
- visible sebaceous glands
- proneness to acne or late acne (adult acne)
- inflammation: pustules, papules, redness and excessive shine
- thickening of the stratum corneum



## CLASSIC CHEMICAL PEEL

for our signature  
treatment





# RED STOP

# LACTOBIONIC, AZELAIC AND GLUCONOLACTONE ACID TREATMENT

**Lactobionic acid** has exfoliating properties but does not cause irritation. Can be applied in sensitive and dry skin care, also in vascular skin with symptoms of erythema. Strengthens skin capillaries, reduces redness, it is recommended in reduction of dilated blood vessels (telangiectasia) and symptoms of rosacea. Strengthens epidermal barrier, has moisturising and anti-aging properties. Stimulates repair mechanisms (by stimulating collagen synthesis).

**Glucunolactone acid** does not cause skin irritation – can be also applied in sensitive skin. Moisturises – increases the function of stratum corneum as a barrier, reduces transepidermal water loss. Accelerates cellular regeneration, regulates metabolism. Inhibits skin ageing, refirms and smooths the skin. Increases resistance of the skin to external irritants.

**Azelaic acid** has anti-bacterial, anti-inflammatory and anti-comedogenic properties, normalises the process of keratinisation, reducing inflammations, redness and erythema. Acts as an 'eliminator' of free radicals, which activate inflammatory processes. Reduces skin discolorations (mainly melasma and post-inflammatory discolorations) and symptoms of rosacea. Does not trigger phototoxic and photoallergic reactions, can be used in the summer with SPF protection.

**RED STOP Peel Formula PHA-AzA Acid 10% pH 4.5 (CP0513)**

**RED STOP Peel Formula PHA-AzA Acid 25% pH 3.5 (CP0514)**

## EFFECTS:

- reduces erythema, irritation symptoms and vascular changes
- seals and shrinks capillaries
- improves micro-circulation
- repairs epidermal barrier functions
- moisturises and soothes the skin
- improves stress resistance and autoregeneration
- has anti-bacterial and anti-inflammation properties
- rejuvenates and improves the skin condition

## INDICATIONS:

- couperose skin
- rosacea skin
- sensitive skin



**CLASSIC  
CHEMICAL  
PEEL**  
for our signature  
treatment



# LIFT PEPTANGO R PHYTIC ACID TREATMENT

**Phytic acid** gently exfoliates the epidermis, accelerates cellular regeneration and restores a natural glow to the skin. Has strong whitening properties, comparable to hydroquinone, brightens skin color. Strong antioxidant (chelates heavy metals), protects DNA from damage and supports its repair processes. Suitable for every skin type, also for sensitive skin. The acid is self-neutralising (does not require the use of a neutraliser).

## LIFT PEPTANGO R PDT Lift R-Peel Phytic Acid 10% pH 5.0 (CP0540)

### EFFECTS:

- strengthened cohesion and skin density
- increased elasticity and springiness
- visible reduction of mimic and age wrinkles
- improvement of face contours
- skin tone brightening

### INDICATIONS:

- all skin types, including sensitive skin
- natural ageing and photo-ageing
- skin flabbing, lack of elasticity, roughness
- mimic and age wrinkles
- loss of natural color of the skin



*PDT laser*   
*treatment*

**CLASSIC  
CHEMICAL  
PEEL**  
for our signature  
treatment



# FERULASHI FERULIC AND SHIKIMIC ACID TREATMENT

**Ferulic acid** is a very strong antioxidant with anti-aging properties. Has photoprotective properties. Has anti-inflammatory properties. Has depigmentating properties. Rebuilds skin matrix, stimulates the synthesis of collagen and elastin, strongly moisturises.

**Shikimic acid** has exfoliating properties but does not cause irritation. It is a perfect modulator for the normalisation of epidermal cell proliferation disorders – in a permanent and stable, way, without causing skin irritation, redness or excessive dryness. Does not cause a feeling of roughness, regulates the thickness of the epidermal layer. Increases moisturisation, reduces transepidermal water loss. Has anti-inflammatory, anti-bacterial and anti-fungal properties (against *Propionibacterium acnes* and *Malassezia furfur*).

## FERULASHI PDT UV Ferulic & Shikimic Acid Kit (CP0527)

### EFFECTS:

- regulation of epidermal proliferation and irrigation processes
- hydration and strengthening of the protective barrier function
- antioxidation - neutralization of free radicals and reduction of damage
- rejuvenation - stimulation of collagen and elastin synthesis
- depigmentation - preventing and reducing discoloration
- anti-inflammatory and photoprotective effect

### INDICATIONS:

- sensitive, reactive and dehydrated skin
- atopic and allergic skin
- skin with damaged lipid barrier
- skin with imbalanced epidermal keratinisation
- irritated and itching skin



*PDT laser*   
*treatment*

**CLASSIC  
CHEMICAL  
PEEL**  
for our signature  
treatment



# PLATINUM PEEL&CURE BLEND PEELING MELANER

**Lactic acid** stimulates the synthesis of ceramides – as one of the basic components of NMFs, it is a natural moisturising component. By decreasing water evaporation, it binds it in the epidermis and restores the tightness of hydrolipid barrier of the skin.

**Citric acid** advantageous influence on collagen of blood vessels (reduction in their fragility and increase in their elasticity). reduced discolourations. stimulation of production of procollagen (basic collagen structure). Increased firmness thanks to stimulation of GAGs (glycosaminoglycans): chondroitin sulfate and hyaluronic acid.

**Salicylic acid** has antibacterial and anti-inflammatory properties, unclogs sebaceous duct, blocked by sebum. Reduces comedones and symptoms of inflammation, reduces the appearance of new ones.

**Kojic acid** has clinically proven decolorisation properties, effectively brightens existing discolorations. Blocks the activity of tyrosinase (the enzyme responsible for the production of melanin), preventing the skin from the appearance of new discolorations.

## PLATINUM PEEL&CURE

### PDT Photodynamic Blended Peel Melaner 46% pH 3.0 (CP055150)

#### EFFECTS:

- reduction of discolouration spots of various etiologies
- brightening of the skin
- hydration
- regeneration and rejuvenation

#### INDICATIONS:

- acne-prone skin
- flaccid skin
- impure skin
- skin in need of rejuvenation and improvement of its condition



*PDT laser  
treatment*

**CLASSIC  
CHEMICAL  
PEEL**  
for our signature  
treatment



# PLATINUM PEEL&CURE BLEND PEELING RETINOLOGIC

**Mandelic acid** has the strongest anti-bacterial properties among all AHAs, regulates the secretion of sebum, has anti-bacterial and anti-inflammatory properties.

**Citric acid** advantageous influence on collagen of blood vessels (reduction in their fragility and increase in their elasticity). Reduced discolourations.

Stimulation of production of procollagen (basic collagen structure).

**Phytic acid** gently exfoliates the epidermis, accelerates cellular regeneration and restores a natural glow to the skin. Has strong whitening properties, comparable to hydroquinone, brightens skin color.

**Salicylic acid** has antibacterial and anti-inflammatory properties, unclogs sebaceous duct, blocked by sebum. Reduces comedones and symptoms of inflammation, reduces the appearance of new ones.

## PLATINUM PEEL&CURE PDT Photodynamic Blended Peel Retinologic 45% pH 3.0 (CP055250)

### EFFECTS:

- regulation of sebum production
- antibacterial action
- & anti-irritation
- regeneration and rejuvenation
- reduction of hyperpigmentation and wrinkles
- reduction of blackheads
- and symptoms of inflammation

### INDICATIONS:

- combination, oily, acne-prone skin
- enlarged pores
- locally dehydrated skin
- skin requiring cleansing and normalisation



*PDT laser  
treatment*

**CLASSIC  
CHEMICAL  
PEEL**  
for our signature  
treatment



# PLATINUM PEEL&CURE BLEND PEELING SENSITER

**Gluconolactone acid** moisturises – increases the function of stratum corneum as a barrier, reduces transepidermal water loss, accelerates cellular regeneration, regulates metabolism. Inhibits skin ageing, refirms and smooths the skin. Increases resistance of the skin to external irritants.

**Lactic acid** stimulates the synthesis of ceramides – as one of the basic components of NMFs, it is a natural moisturising component. By decreasing water evaporation, it binds it in the epidermis and restores the tightness of hydrolipid barrier of the skin.

**Shikimic acid** has exfoliating properties but does not cause irritation. It is a perfect modulator for the normalisation of epidermal cell proliferation disorders – in a permanent and stable, way, without causing skin irritation, redness or excessive dryness.

**Azeloglycine** – a novel combination of azelaic acid and the amino acid glycine with intense moisturising, soothing and anti-inflammatory effects.

**High-molecular hyaluronic acid (1MDa)** – forms a protective film, increases moisture reserves, reduces transepidermal water loss. Protects the skin against drying and adverse effects of external factors. Gives an immediate sense of proper skin tone and elasticity. Strengthens network of collagen and elastin fibres, smoothes wrinkles.

## PLATINUM PEEL&CURE PDT Photodynamic Blended Peel Sensiter 45,5% pH 3.2 (CP055350)

### EFFECTS:

- strong hydration
- stimulation of collagen and elastin production
- stimulation of moisture and elasticity
- smoothing wrinkles
- brightening of spots and discolourations

### INDICATIONS:

- thin, delicate skin
- couperose and sensitive skin
- in need of strengthening and regeneration



*PDT laser  
treatment*

**CLASSIC  
CHEMICAL  
PEEL**  
for our signature  
treatment



# PLATINUM PEEL&CURE BLEND PEELING AGE CLINIC

**Glycolic acid** – stimulates the functions of alive skin cells, fibroblasts and the synthesis of collagen and elastin. Normalises the processes of keratinization of epidermis, moisturises and unclogs hair follicles openings, preventing the appearance of first non-inflammatory symptoms of acne.

**Lactic acid** stimulates the synthesis of ceramides – as one of the basic components of NMFs, it is a natural moisturising component. By decreasing water evaporation, it binds it in the epidermis and restores the tightness of hydrolipid barrier of the skin.

**Citric acid** reduced discolourations. Stimulation of production of procollagen (basic collagen structure). Increased firmness thanks to stimulation of GAGs (glycosaminoglycans): chondroitin sulfate and hyaluronic acid.

**Mandelic acid** – strongest anti-bacterial properties among all AHAs, regulates the secretion of sebum, has anti-bacterial and anti-inflammatory properties.

## PLATINUM PEEL&CURE

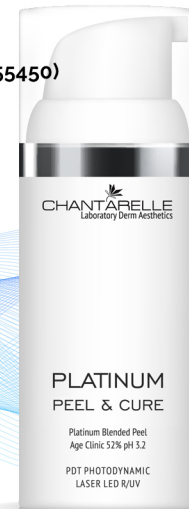
### PDT Photodynamic Blended Peel Age Clinic 52% pH 3.2 (CP055450)

#### EFFECTS:

- stimulation of collagen and elastin production
- stimulation of moisture and elasticity
- smoothing wrinkles
- brightening of spots and discolouration
- smoothed scars
- regeneration and rejuvenation

#### INDICATIONS:

- dry, mature skin
- loss of firmness and wrinkles
- requiring hydration and lifting



*PDT laser  
treatment*

**CLASSIC  
CHEMICAL  
PEEL**  
for our signature  
treatment



CHANTARELLE  
Laboratory Derm Aesthetics



 #chantarelle.polska

 #chantarelle\_polska



www.chantarelle.pl