


CHANTARELLE
Laboratory Derm Aesthetics

THERMO-SPHERIX®

M-RF / LLLT
LASER WITH ROTATING MAGNETIC FIELD



Thermo-laser device with 18 programs / with 2 heads
with a rotating magnetic field
thermo-lifting and thermo-modelling
and thermo-infusion

THERMO-SPHERIX® LASER



THERMO-SPHERIX® M-RF THERMO LASER LLLT

Thermo-laser device with 18 programs /
with 2 heads
with a rotating magnetic field
LASER IR 940 nm + IR 1200 nm + R 650 nm

THERMO-SPHERIX® is a 2-head device, unique on the market of professional dermo-aesthetics for non-invasive thermal lifting, modelling and firming treatments for face and body and for thermal infusion of active preparations.



EFFECTS OF A WIDE RANGE OF TREATMENTS for men and women are spectacular, immediately visible after the treatment, and lasting in the long term:

- ◆ non-invasive face and body lifting
- ◆ reduction of wrinkles and regeneration
- ◆ improvement of skin tension and density
- ◆ improvement of blood circulation, oxygenation, lymphatic drainage, detoxification
- ◆ increased synthesis of collagen and formation of new elastic fibres
- ◆ slimming and reduction of cellulite
- ◆ body modelling, skin firming
- ◆ thermo-infusion – better penetration of active compounds into the skin, thermal massage



PERFECT TREATMENT EFFECTS OF THERMO-MODELLING, CONFIRMED BY RESEARCH:

- ◆ mean loss of centimetres in the examined area at two measurement sites:
after 10 treatments - 11,60 cm,
after 5 treatments - 6,50 cm.
- ◆ mean loss of centimetres in the examined area at one measurement site
after 10 treatments - 6,5 cm,
after 5 treatments - 3,57 cm.
- ◆ 78% participants achieved a satisfactory effect of slimming.
- ◆ 100% participants observed a significant improvement of the skin condition in the form of increase of the skin elasticity and tension.
- ◆ All participants described the treatment as nice and painless.
No undesired effect observed.
*Tests performed by an independent institute in the group of 20 participants from 01 to 05. 2015



ADVANTAGES FOR THE BEAUTY SALON AND THE CLIENT

- treatments are intensive but painless and non-invasive
- feeling of heat is nice and relaxing
- no risk of skin burn or damage, the treatment is absolutely safe
- after the treatment, the skin is firmer, smoother, soothed, the client can immediately return to his or her daily activities
- please note that the skin can appear to be slightly reddened after the treatment but this is only temporary
- treatments are designated for men and women



THERMO-SPHERIX® M-RF THERMO LASER LLLT

- Two heads: Magneto-Laser + Magneto-RF
- LASER R/IR with nominal power of 70mW
- LASER 940nm (IR - InfraRed)
- LASER 1200nm (IR - InfraRed)
- LASER 650nm (R - Red)
- Laser safety class 3R
- Laser protective glasses CE marked
- Eye shields CE marked
- Specialist labelling for the beauty salon
- Set of disposable body mapping templates

THERMO-INFUSION

A unique method of introducing CHANTARELLE active ingredients and their improved penetration into the skin, as well as a thermal massage method.

- ◆ patented, rotating magnetic field emitted by the head has a double action:
 - it provides accumulated therapeutic effects through intensification of metabolic processes inside cells as well as heating tissues up to 38°C
- ◆ improves blood circulation, the skin is better oxygenated and nourished and optimally prepared for absorption of active ingredients
- ◆ in effect, they deeply penetrate into the skin, and are maximally absorbed by skin cells
- ◆ it is also a gentle THERMAL MASSAGE – the feeling of heat is pleasant and relaxing for the skin
- ◆ used in treatments: selected CHANTARELLE preparations may be used in thermal infusion treatments- skin softening cream, concentrates in ampoules from CHANTARELLE signature treatment product lines, PDT BLACK ESSENTIAL concentrates, masks from CHANTARELLE signature treatment product lines, creams.
Do not use with acid-containing preparations.

THERMO-LIFTING

- ◆ A unique and, non-invasive method of rejuvenating and improving body and face condition. Spectacularly lifts facial contours, reduces wrinkles and increases skin firmness and density.
- ◆ The head with the rotating magnetic field heats up tissues to the TEMPERATURE OF 41°C (level 1) or 42°C (level 2 Forte) PRECISELY AND EVENLY across the whole tissue (up to dermis 10-15mm deep), directing the heat towards elastic fibres of collagen and elastin without destroying of the surrounding tissues. The final effect is the shortening of elastic fibres and the immediate, intensive skin firming, and increased elasticity and firmness of the skin. At the same time, fibroblasts are stimulated to produce new collagen. In this manner, the complex process of dermis remodelling begins - thermo-lifting stimulates blood circulation and oxygenation of cells, improves lymphatic drainage and detoxification, active ingredients are better and deeper absorbed into the skin.
- ◆ The best synergic effects are obtained after several weeks, 3 to 6 months, depending on the skin condition, when effects of immediate lifting and a long-term pro-collagen stimulation are accumulated.
- ◆ Thermo-active preparations for skin lifting with GABA neurotransmitters from THERMO-LIFTING KIT Face & Body Skin are recommended for maximisation and acceleration of effects. They are designated for treatments with temperatures of up to 70°C.
- ◆ Recommended are 4 treatments every 7 days, depending on the skin condition.
- ◆ The scope of thermo-lifting treatments for face and body skin:
 - lifting and correction of the face, neck and chin oval
 - lifting of bust, forearms, knees
 - lifting of buttocks, internal sides of thighs, abdomen

THERMO-MODELLING AND LIPOPLAST

A method of laser lipolysis using pulsating magnetic field is a perfect alternative to surgery. It efficiently reduces locally accumulated deposits of fat tissue and cellulite and firms of face and body skin at the same time.

Magneto-laser thermo-modelling head combines 4 efficient technologies – it emits laser light with the following wavelengths: infrared IR 940nm and 1200nm, red R 650nm and pulsating magnetic field.

- ◆ Laser energy of IR 940nm and/or 1200nm (depending on the programme) is precisely directed into the fat cells – adipocytes, without destroying of the surrounding tissues. The accumulated energy gives a thermal effect causing a liquefaction of fat (decomposition of triglycerides to free fatty acids and glycerol) Red laser 650nm enhances blood circulation, stimulates regeneration, and temporarily opens the cellular membranes, allowing for removal of the liquefied fat.
- ◆ Pulsating magnetic field increases the temperature of tissues subject to the treatment and the treatment efficiency. It improves circulation of blood and lymph, thanks to which the liquefied fat is quickly metabolised, it significantly improves skin parameters by boosting an increase of collagen and elastin synthesis and accelerating in cellular metabolism. At a the result, skin is firm and elastic after the loss of excessive fat.
- ◆ A draining massage is performed after thermo-modelling in order to support fat removal from the system.
- ◆ Thermo-active preparations for skin modelling with a uniquely rich active base, 30 slimming, anti-cellulite and firming CHANTARELLE formulas are recommended for the maximisation and acceleration of effects. They are designated for treatments with temperatures of up to 70°C.
- ◆ Recommended are 5- 10 treatments depending in the skin condition and client expectations.
- ◆ The scope of thermo-modelling treatments for body and face skin:
 - reduction of face and body adipose tissue:
 - double chin and breasts reduction, modelling of abdomen, thighs, buttocks, nape, forearms, knees
 - cellulite reduction– treatment programmes for cellulite type I (caused by fluid retention) through to type IV
 - special programmes for men – including breast reduction



CHAN
TARE
LLE

The THERMO SPHERIX device offers 18 pre-programmed TREATMENT PROCEDURES with easy-to-use and intuitive „step by step” interface and special preparations: for face – to be used in synergy with probe MLP-H1. SKIN LIFTING THERMO FASHION and for body – to be used in synergy with probe MLP-H2. BODY SKIN THERMO FASHION.

Prone MLP-H1. SKIN LIFTING THERMO FASHION

Program me No.	Indications	Operating scope of probe MLP-H1. SKIN LIFTING THERMO FASHION (probe with rotating magnetic field)	Preparations for probe MLP-H1. SKIN LIFTING THERMO FASHION
H1.01 UNI	THERMO-INFUSION/WOMEN&MEN/ FACE & BODY	Reconstruction of the skin density, restoration of the skin firmness and the contouring of face, chin and other areas requiring such a procedure – thanks to a thermal effect that uses an even and controlled distribution of heat field generated from the use of the rotating magnetic field as the source of heat. Elastic fibres become shorter („tensed”) and „unbundled” and the appropriately developed usage procedures stimulate the production of new collagen and elastin. The use of this probe is also efficient in stimulating local reconstruction of skin areas affected by stretch-marks and thinning, and flabbiness.	THERMO-LIFTING KIT Face & Body Skin, CP1511: -STRETCH ELASTO-SERUM 50ml -THERMO LIFTING CREAM GABA 50ml ABSOLUTE RICH MOISTURE: PDT THERMO Absolute Moisturising Ceramide Serum Hydrolipidic Firmness Booster (CP184330) PDT THERMO Absolute Moisturising Lift Effect Mask Ceramide & Collagen Booster (CP0861) SUPERIOR YOUTH BOOST: PDT Niacinamide & GABA Boost-Serum, CP184130, 30ml AGEMELAN HOLISTIC: PDT THERMO Agemelan Holistic Face & Neck Serum pH 4.5, CP1891, 30ml PDT THERMO Agemelan Holistic Decollette & Body Serum pH 4.5 CP1892, 100ml PDT THERMO Agemelan Holistic Eye Serum pH 4.5, CP0637, 10ml SEBUMELAN HOLISTIC: THERMO Citric Enzyme Peel pH 4.5, Normalising Anti Acne Spot & Scars, CP0420, 200ml PDT THERMO ANTI-BACTERIAL SERUM pH 4.5, Normalising Anti Acne Spot & Scars, CP1895, 30ml
	Skin with temperature hypersensitivity		
H1.02 UNI	THERMO- LIFTING LEVEL 1 WOMEN&MEN/ FACE & BODY		
	Skin with moderate temperature sensitivity		
H1.03 UNI	THERMO- LIFTING LEVEL 2 FORTE WOMEN&MAN/ FACE & BODY		
	Skin with low temperature sensitivity		

Prone MLP-H2. FACE & BODY THERMO FASHION

Program me No.	Indications	Operating scope of probe MLP-H2. BODY SKIN THERMO FASHION (probe with diodes 650nm, 940nm and 1200nm and rotating magnetic field)	Preparations for probe MLP-H2. BODY SKIN THERMO FASHION
H2.01 WOMEN	H2.01 CELLULITE 0 WOMEN 40- /CELLU-ESTHETIC LIPO-SLIM/ FIRMING SHAPE	Increase in immunological immunity, remodelling and „unbundling” of elastic fibres and boost of collagen synthesis, increase in the skin density/cohesion, improvement in the skin blood flow and „the arrangement” of the vascular system; stimulation of the discharge of the fat released from the adipocytes through cell membranes opened due to the effect of laser 650nm, which enables easy removal of the fat from the organism (physiologically and mechanically/through massage).	Preparations for probe H2 for treatment women and men: -TEA THERMO-PEEL peeling, CP1880, 50ml - SLIM-Esthetic Cinnamon Cream thermo-active, CP1881, 500ml - CELLU-Esthetic Grapefruit Cream thermo-active, CP1883, 500ml
	Cellulite severity level 0		
H2.02 WOMEN	H2.02 CELLULITE 0 WOMEN 40+ /CELLU-ESTHETIC LIPO-SLIM/ FIRMING SHAPE		
	Cellulite severity level 0		
H2.03 WOMEN	H2.03 CELLULITE 1 WOMEN 40- /CELLU-ESTHETIC LIPO-SLIM/ FIRMING SHAPE	Skin rejuvenation through increased moisturisation (stimulation of production of „internal” hyaluronic acid), improvement in firmness, removal of local flabbiness, including stretch-marks, minimisation of the	
	„40-”, tissue morphology characteristic for cellulite severity level 1		
H2.04 WOMEN	H2.04 CELLULITE 1 WOMEN 40+ /CELLU-ESTHETIC LIPO-SLIM/ FIRMING SHAPE		
	„40+”, tissue morphology characteristic for cellulite severity level 1		

H2.11 WOMEN	H2.11 WOMEN - SPECIAL BODY ZONE SLIM-ESTHETIC Reduction in flabbiness of arms; re-firming of skin areas affected by stretch-marks	appearance of scars; increased absorption of photodynamic energy 940nm in the adipose tissue, excluding the absorption in the water; the tissue – liquefaction of adipocytes for an easier removal of fat from the organism.	
H2.12 MEN	H2.12 MEN 45- / SLIM-ESTHETIC /LIPO-SLIM FIRING SHAPE Slimming and re-firming treatment for younger men affected by locally excessive thickness of adipose tissue		
H2.05 WOMEN	H2.05 CELLULITE 2 WOMEN 40- /CELLU-ESTHETIC LIPO-SLIM/ FIRING SHAPE „40-“, tissue morphology characteristic for cellulite severity level 2	Increased absorption of photodynamic energy 1200nm into the adipose tissue, without the absorption into other chromophores of the tissue – liquefaction of adipocytes for an easier removal of fat from the organism. Stimulation of improvement in stretchiness/firmness of the skin, rejuvenation, improvement in the blood flow of the tissues.	
H2.06 WOMEN	H2.06 CELLULITE 2 WOMEN 40+ /CELLU-ESTHETIC LIPO-SLIM/ FIRING SHAPE „40+“, tissue morphology characteristic for cellulite severity level 2		
H2.07 WOMEN	H2.07 CELLULITE 3 WOMEN 40- /CELLU-ESTHETIC LIPO-SLIM/ FIRING SHAPE „40-“, tissue morphology characteristic for cellulite severity level 3		
H2.13 MEN	H2.13 MEN 45+/ SLIM-ESTHETIC / LIPO-SLIM FIRING SHAPE „45+“, Slimming and re-firming treatment for men affected by locally excessive thickness of adipose tissue		
LIPOPLASTY			
H2.08 WOMEN	H2.08 CELLULITE 3 WOMEN 40+ /CELLU-ESTHETIC LIPO-SLIM/ FIRING SHAPE „40+“, tissue morphology characteristic for cellulite severity level 3	Maximum accumulation of photodynamic energy 940nm and 1200nm in adipocytes, without the absorption into other chromophores of tissues – liquefaction of adipocytes for an easier removal of fat from the organism. Stimulation of improvement in stretching/firmness of the skin, rejuvenation, improvement in the blood flow.	
H2.09 WOMEN	H2.09 WOMEN 40-/ SLIM-ESTHETIC / LIPO-SLIM FIRING SHAPE „40-“, women affected by locally excessive content and thickness of adipose tissue		
H2.10 WOMEN	H2.10 WOMEN 40+/ SLIM-ESTHETIC / LIPO-SLIM FIRING SHAPE „40+“, women affected by locally very excessive thickness of adipose tissue		
H2.14 MEN	H2.14 MEN - SPECIAL BODY ZONE SLIM-ESTHETIC Reduction in flabbiness of arms; re-firming of skin areas affected by stretch-marks; reduction of adipose tissue in the breast area in men; reduction of the adipose tissue in the nape		
FACE			
H2.15 WOMEN MEN	H2.15 FACE RENEW PHOTOMAGNET-BIOMODULATION CELL REGENERATION / PRO-COLLAGEN / ANTI-AGEING	Maximum accumulation of photodynamic energy 650nm: reduction of wrinkles, remodelling of face oval, minimisation of effects of photo-damage and photo-ageing, increase in hydration and elasticity, reduction of erythema, reduction of symptoms of acne, also adult acne, reduction of swelling, anti-inflammatory, anti-bacterial, and anti-fungal properties, stimulation of faster hair growth	All Chantarelle products for use with 650nm red light

THERMOACTIVE PREPARATIONS designed for THERMO-SPHERIX®:

ABSOLUTE RICH MOISTURE

PDT THERMO ABSOLUTE MOISTURISING CERAMIDE SERUM Hydrolipidic Firmness Booster (CP184330)
PDT THERMO ABSOLUTE MOISTURISING LIFT EFFECT MASK Ceramide & Collagen Booster (CP0861)

SUPERIOR YOUTH BOOST

PDT NIACINAMIDE & GABA Boost-Serum Recovery Wrinkle Filler (CP184130)
PDT PERFECT SMOOTH RICH RECOVERY BOOST-MASK with niacinamide (CP0859)

SEBUMELAN HOLISTIC

THERMO CITRIC ENZYME PEEL pH 4.5, Normalising Anti Acne Spot & Scars (CP0420)
PDT THERMO ANTI-BACTERIAL SERUM pH 4.5, Normalising Anti Acne Spot & Scars (CP1895)

AGEMELAN HOLISTIC

PDT THERMO FACE & NECK SERUM pH 4.5 (CP1891)
PDT THERMO DECOLETTE & BODY SERUM pH 4.5 (CP1892)
PDT THERMO EYE SERUM pH 4.5 (CP0637)

THERMO-LIFTING

THERMO-LIFTING KIT Face & Body Skin (CP1511)

THERMO-MODELLING

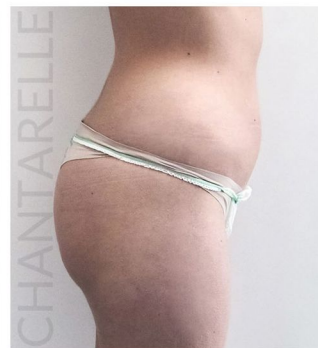
SLIM-ESTHETIC CINNAMON CREAM THERMO-ACTIVE (CP1881)
CELLU-ESTHETIC GRAPEFRUIT CREAM THERMO-ACTIVE (CP1883)

Woman 28 years of age

Before



After



Diagnosis: small local excess of adipose tissue. During the testing period, the test subject did not eat bread and meat and increased the share of vegetables in her diet. She did not do any sport.

After 5 treatments, the abdominal diameter decreased by 2.5 cm, and after 10 treatments by 7.5 cm.

Woman 54 years of age

Before



After



Diagnosis: abdominal obesity. The test subject did not do sport and her diet was rather high in fat and sugar. During the testing period, she limited the consumption of sweets.

After 5 treatments, the abdominal diameter decreased by 6.5 cm, and after 10 treatments by 9 cm.

Woman 22 years of age

Before



After



Diagnosis: general obesity. The test subject did not do sport, and her diet was high in fat and sugar. During the testing period, she did not change her lifestyle.

After 5 treatments, the abdominal diameter decreased by 2.5 cm, and after 10 treatments by 6.5 cm.

Woman 27 years of age

Before



After



Diagnosis: excess of adipose tissue. During the testing period, the test subject started a fruit & vegetable diet. She actively did sport.

After 5 treatments, the abdominal diameter decreased by 4.5 cm, and after 10 treatments by 8 cm.